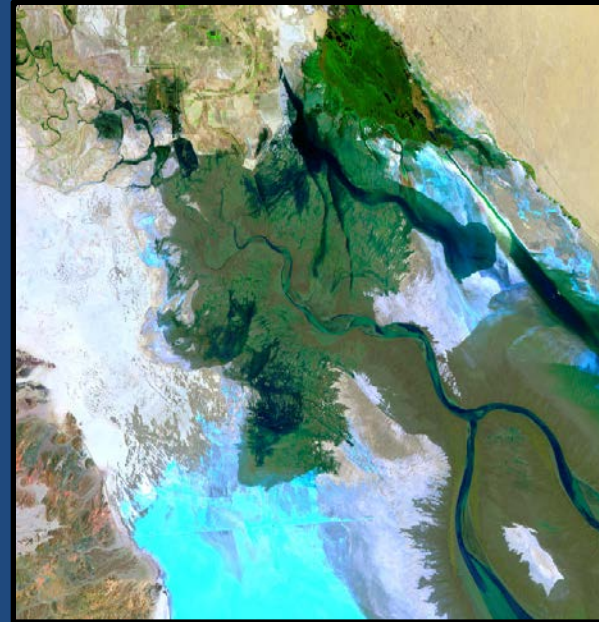
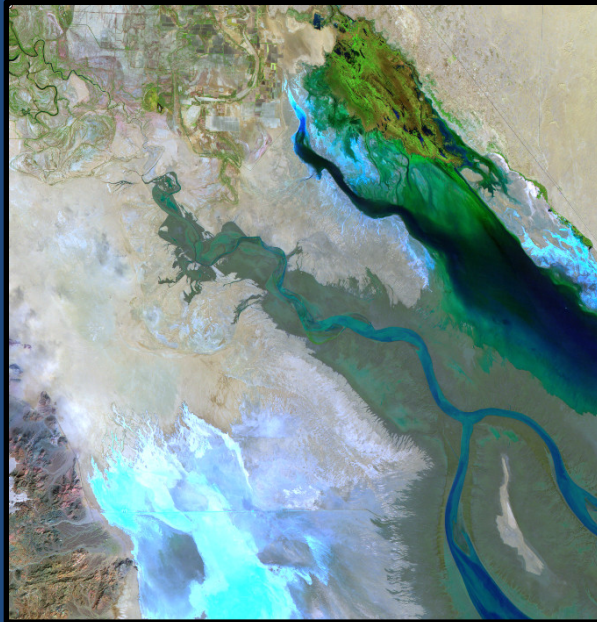


# UAVSAR studies of earthquake related surface deformation in the Colorado River estuary, Mexico



1. Steven M. Nelson, 6101 NE 102nd Avenue Apt 5, Vancouver, WA 98662
2. Eric J. Fielding, Jet Propulsion Laboratory, California Institute of Technology, M/S 300-233, 4800 Oak Grove Drive, Pasadena, CA 91109
3. Francisco Zamora-Arroyo, Sonoran Institute, 44 E. Broadway Blvd., Suite 350, Tucson, AZ 85701
4. Karl Flessa, Department of Geosciences, University of Arizona, Tucson, AZ 85721

G Model

ECOENG-2312; No. of Pages 13

ARTICLE IN PRESS

Ecological Engineering xxx (2012) xxx–xxx  
<http://dx.doi.org/10.1016/j.ecoleng.2012.09.004>



Contents lists available at SciVerse ScienceDirect

Ecological Engineering

journal homepage: [www.elsevier.com/locate/ecoleng](http://www.elsevier.com/locate/ecoleng)



## Delta dynamics: Effects of a major earthquake, tides, and river flows on Ciénega de Santa Clara and the Colorado River Delta, Mexico

Steven M. Nelson<sup>a,\*</sup>, Eric J. Fielding<sup>b</sup>, Francisco Zamora-Arroyo<sup>c</sup>, Karl Flessa<sup>d</sup>

<sup>a</sup> 6101 NE 102nd Avenue Apt 5, Vancouver, WA 98662, United States

<sup>b</sup> Jet Propulsion Laboratory, California Institute of Technology, M/S 300-233, 4800 Oak Grove Drive, Pasadena, CA 91109, United States

<sup>c</sup> Sonoran Institute, 44 E. Broadway Blvd., Suite 350, Tucson, AZ 85701, United States

<sup>d</sup> Department of Geosciences, University of Arizona, Tucson, AZ 85721, United States

<http://dx.doi.org/10.1016/j.ecoleng.2012.09.004>

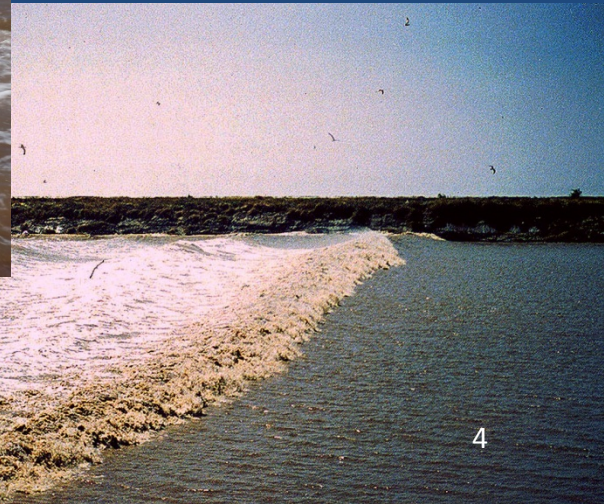
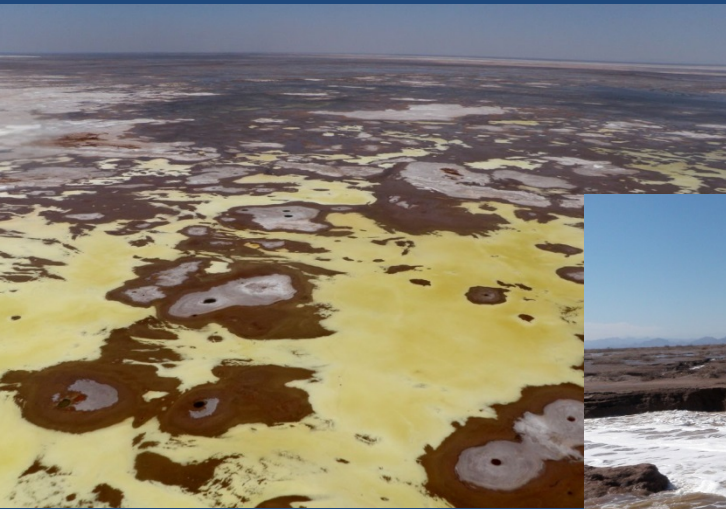
## This study:

- Reviews historical interactions of tectonic, fluvial, and tidal forces
- Examines effects of the 2010 Mw 7.2 El Mayor-Cucapah Earthquake on changing patterns of tidal inundation
- Assesses effects of tidal changes on the fluvial/hydrological regime of the Colorado River estuary and nearby Ciénega de Santa Clara wetland
- Provides information of practical value in planning and designing management measures and restoration projects for the estuary and Ciénega



# The Intertidal Colorado River Delta:

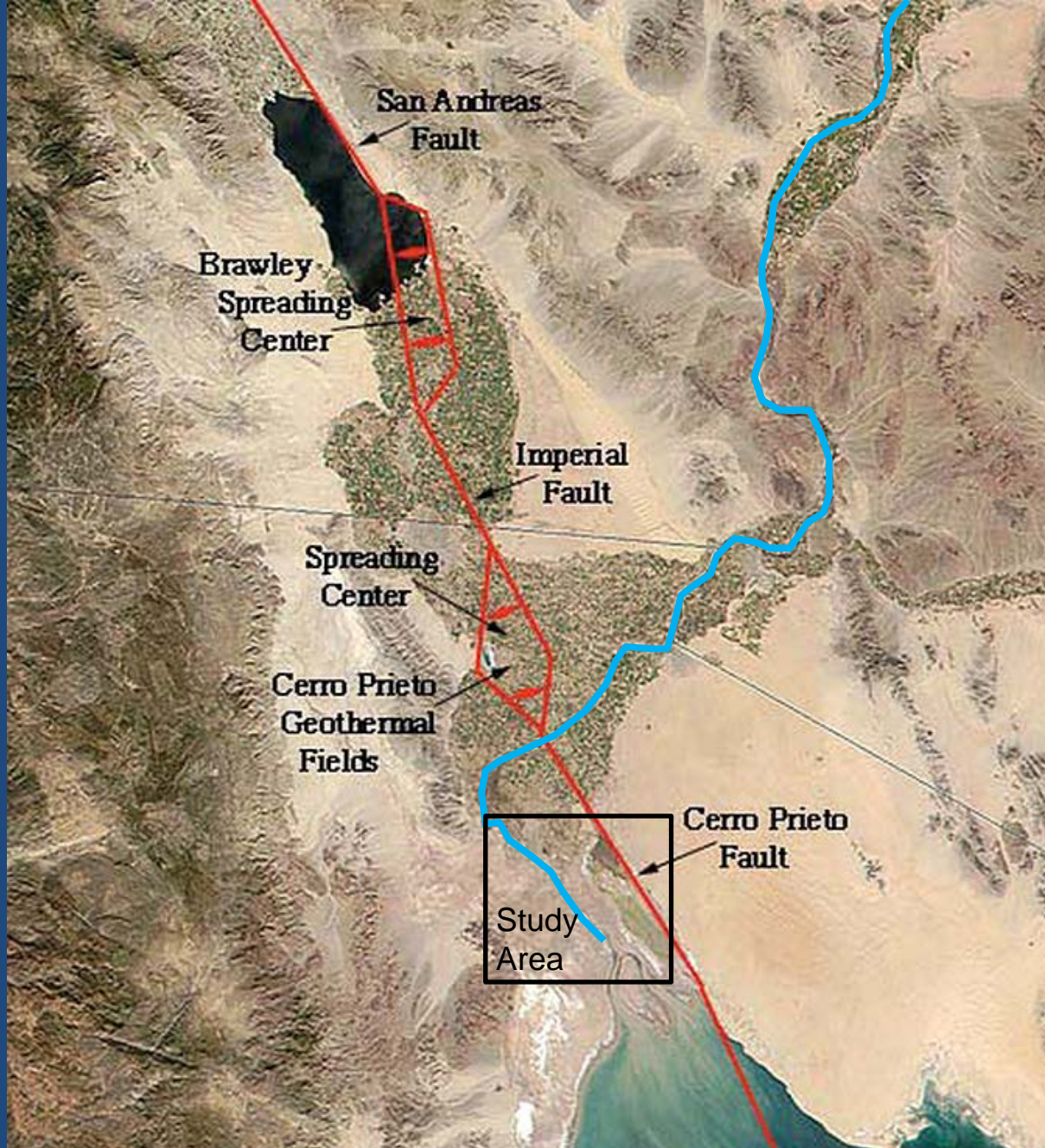
A dynamic environment subject to complex interactions of tectonic, fluvial, and tidal forces at the head of the Gulf of California.





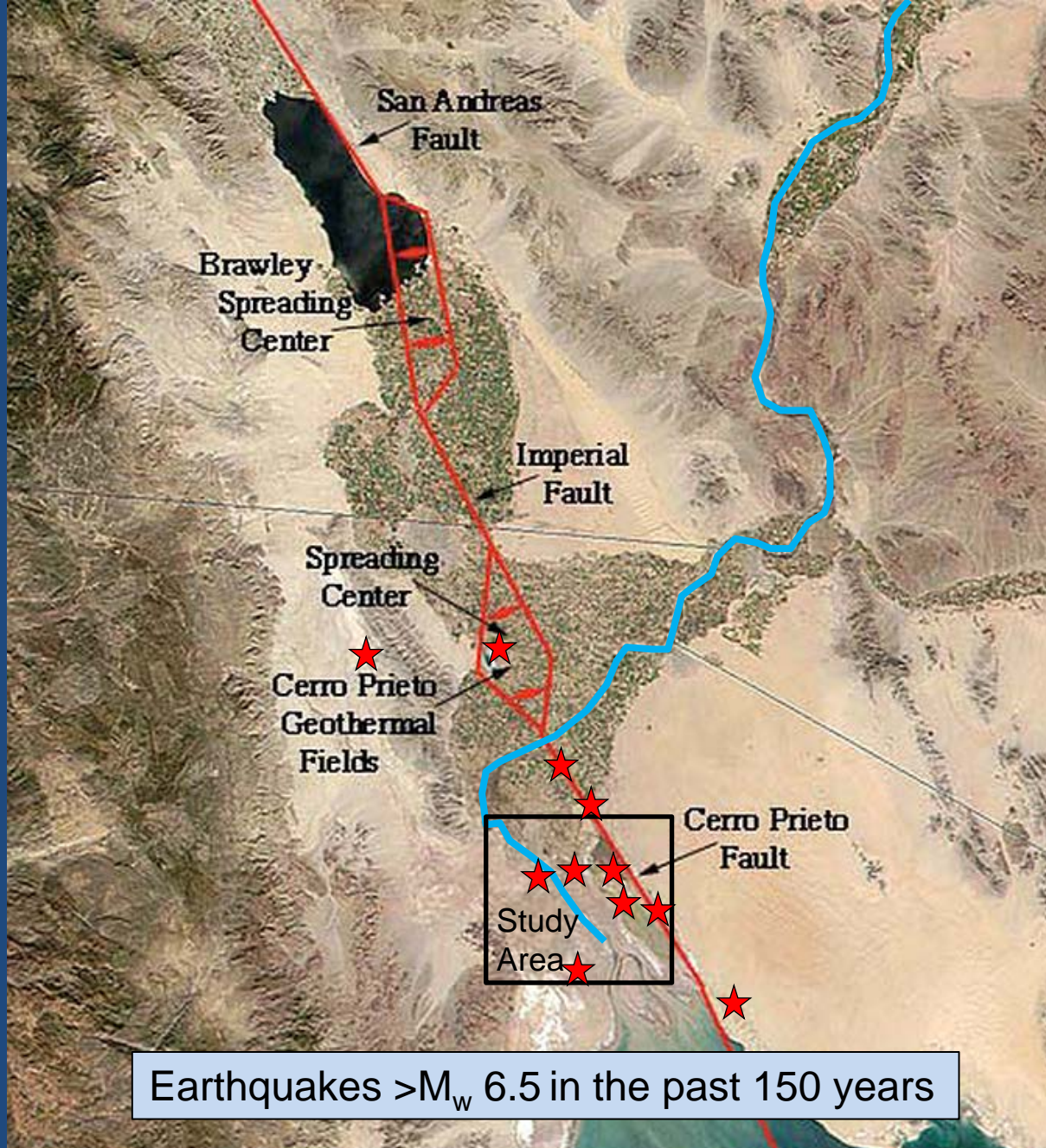


Modified from: Alles, D.L. 2011. Geology of the Salton Trough. Retrieved from <http://fire.biol.wvu.edu/trent/alles/GeologySaltonTrough.pdf> on February 25, 2012.



Modified from: Alles, D.L. 2011. Geology of the Salton Trough. Retrieved from <http://fire.biol.wvu.edu/trent/alles/GeologySaltonTrough.pdf> on February 25, 2012.





Earthquakes >M<sub>w</sub> 6.5 in the past 150 years



An aerial photograph showing a large, complex wetland system. A prominent river channel, the Colorado River, flows from the top left towards the bottom right. The river is surrounded by a dense network of smaller channels, oxbow lakes, and marshy areas. The terrain is a mix of light brown and tan, indicating arid or semi-arid conditions, with patches of green vegetation. A small, dark, rectangular structure is visible on the right side of the river. The overall appearance is that of a highly modified natural landscape.

## Cienega de Santa Clara

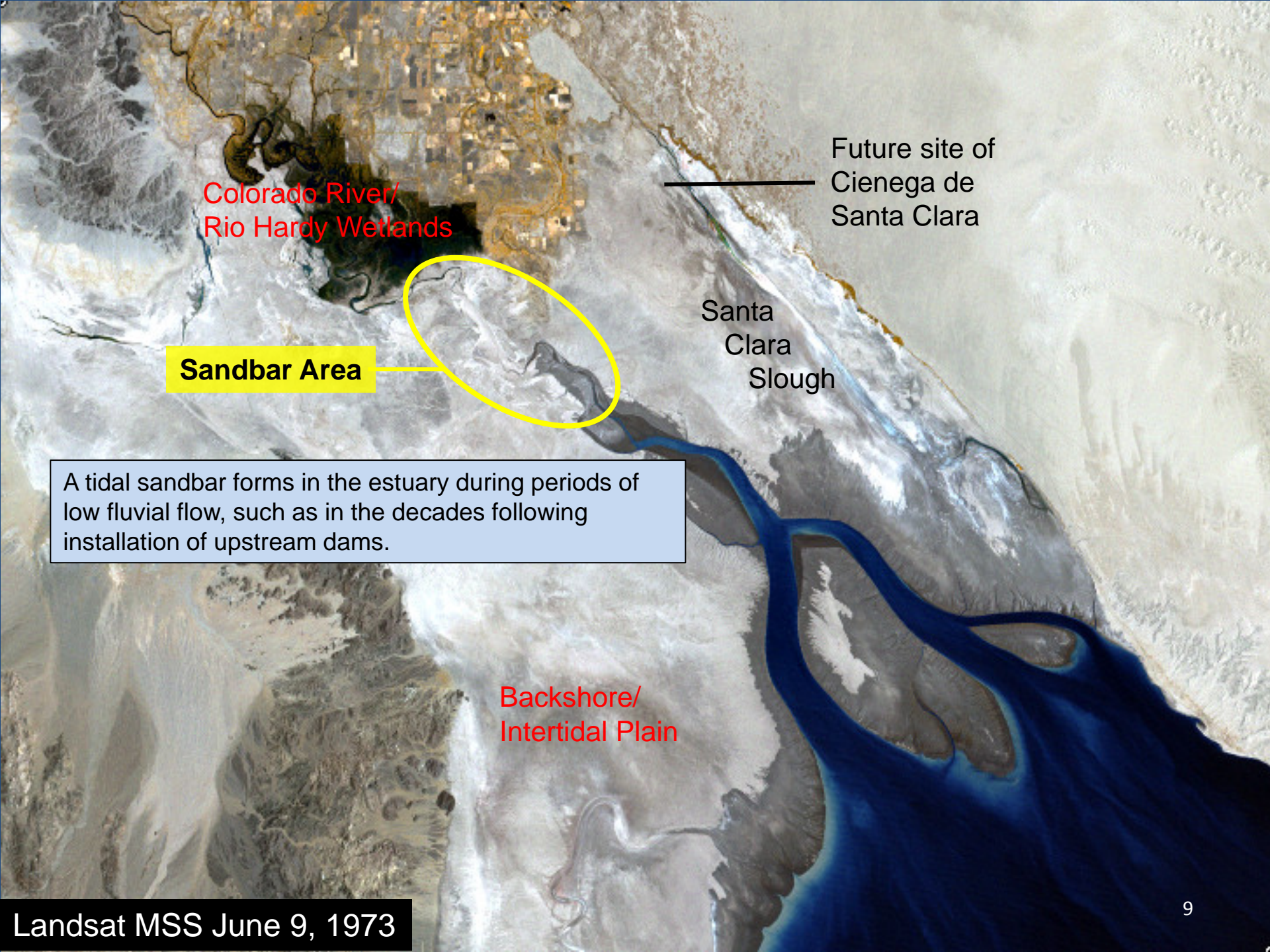
- Largest wetland (6000+ ha) in Sonora
- Anthropogenic origin: Brackish agricultural runoff delivered by canal from the US and Mexico (since 1977).
- 75% of total population of Yuma clapper rail
- Also California black rail, sora rail, least bittern
- Resting spot for numerous migratory birds

## Colorado River Estuary

Spawning area for:

- Totoaba (*Totoaba macdonaldi*) (endangered)
- Gulf corvina (*Cynoscion othonopterus*)
- Penaeid shrimp





Colorado River/  
Rio Hardy Wetlands

Future site of  
Cienega de  
Santa Clara

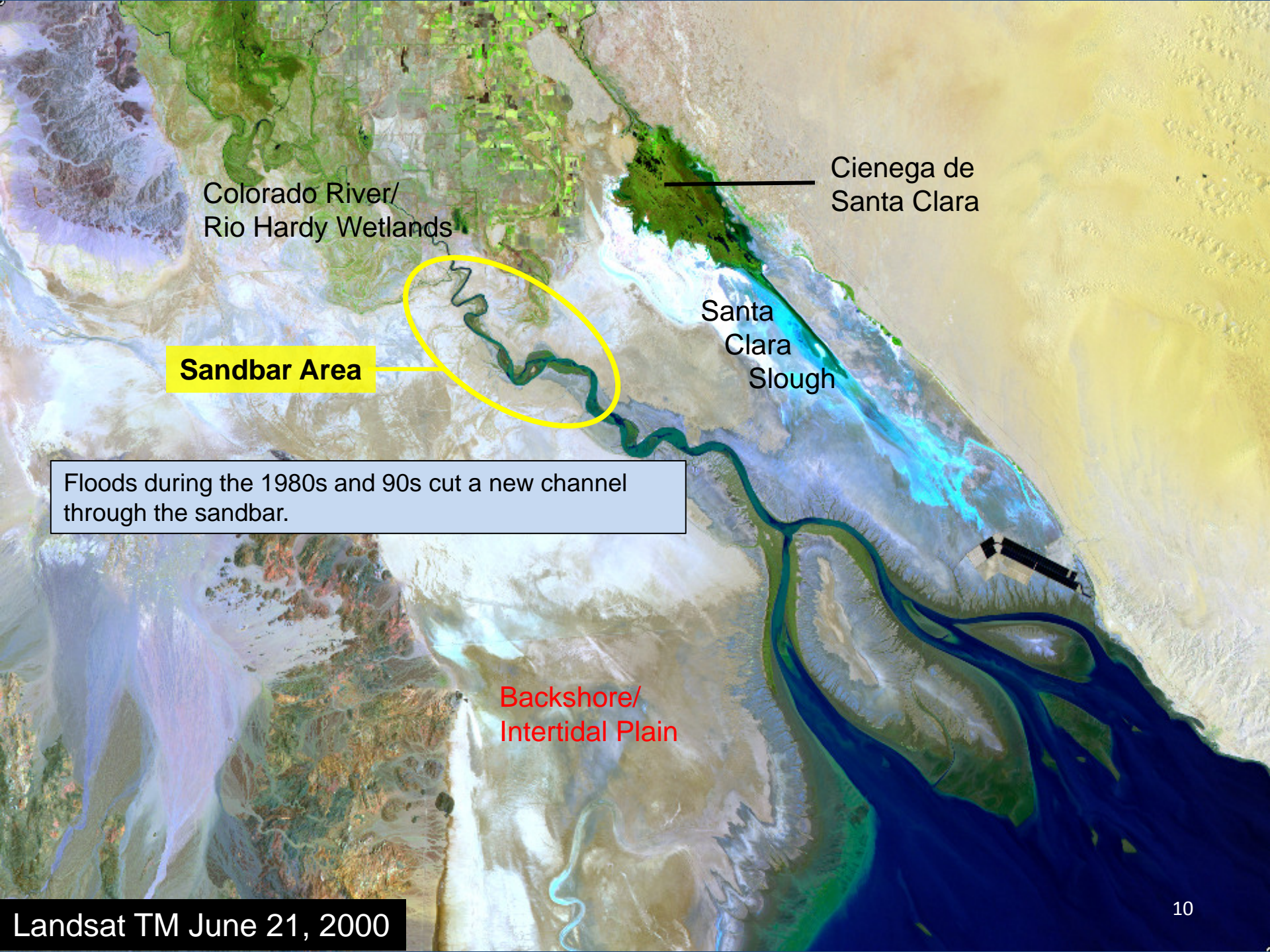
Santa  
Clara  
Slough

**Sandbar Area**

A tidal sandbar forms in the estuary during periods of low fluvial flow, such as in the decades following installation of upstream dams.

Backshore/  
Intertidal Plain





Colorado River/  
Rio Hardy Wetlands

Cienega de  
Santa Clara

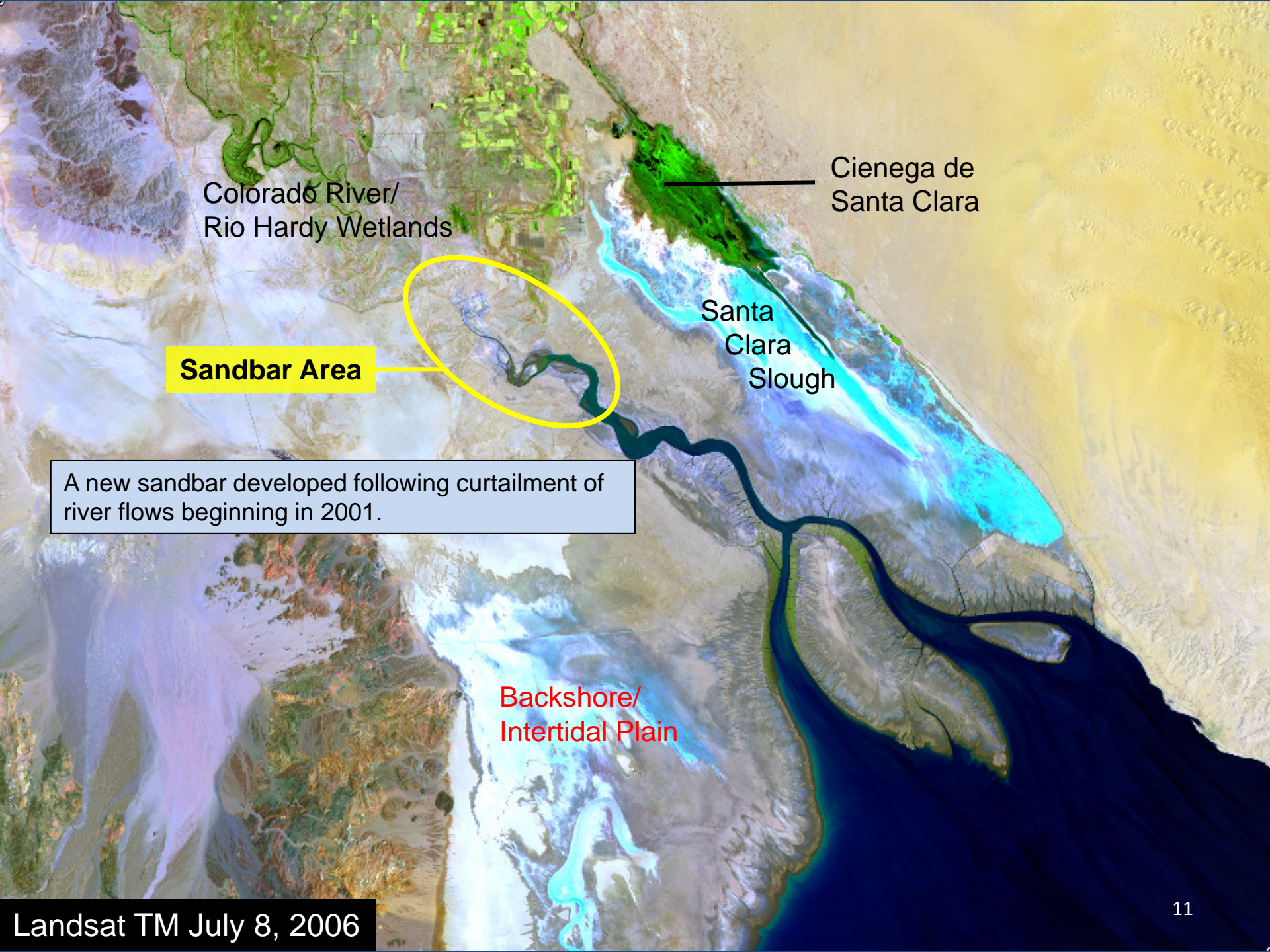
**Sandbar Area**

Santa  
Clara  
Slough

Floods during the 1980s and 90s cut a new channel through the sandbar.

Backshore/  
Intertidal Plain





Colorado River/  
Rio Hardy Wetlands

Cienega de  
Santa Clara

Santa  
Clara  
Slough

**Sandbar Area**

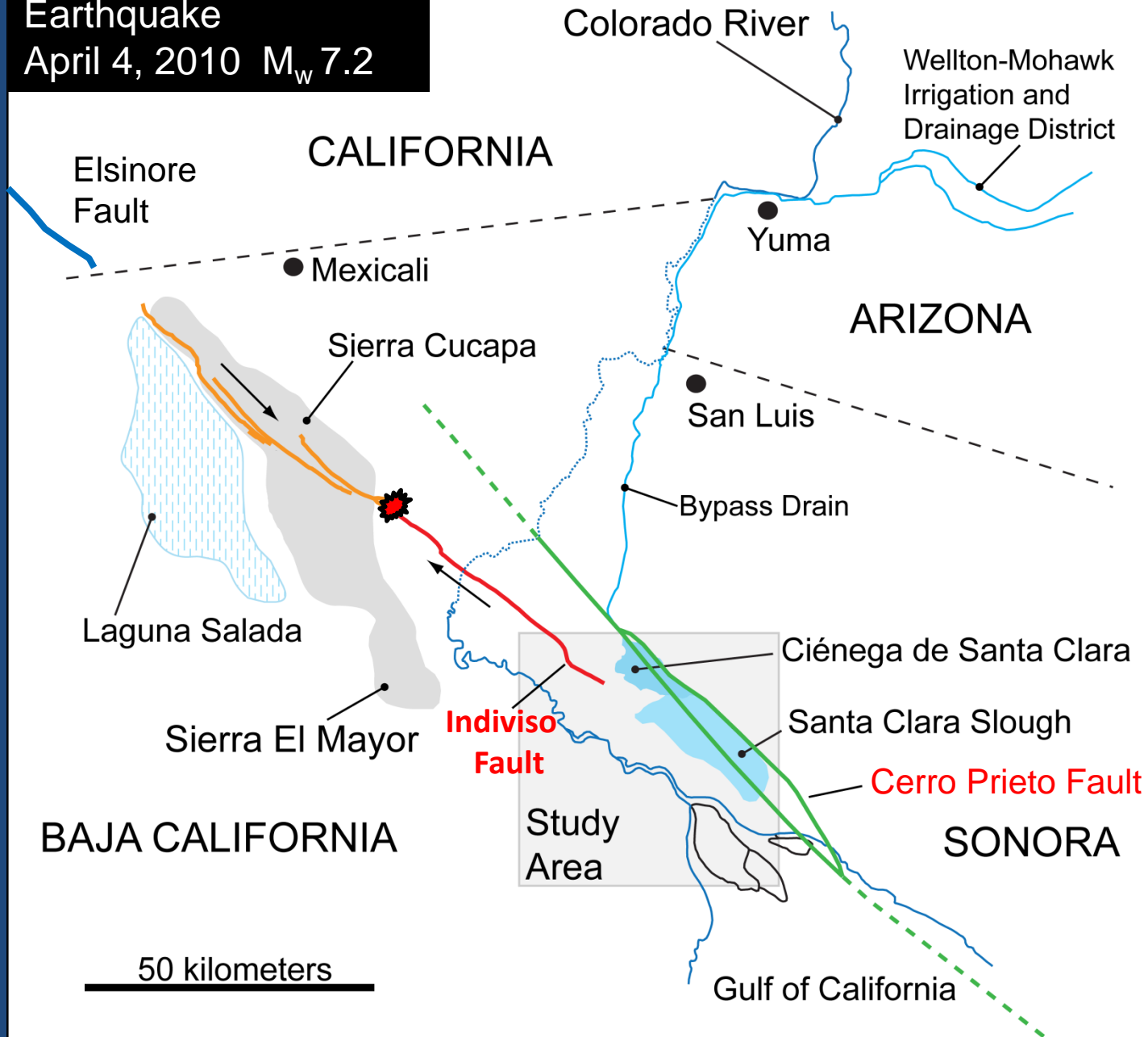
A new sandbar developed following curtailment of river flows beginning in 2001.

Backshore/  
Intertidal Plain

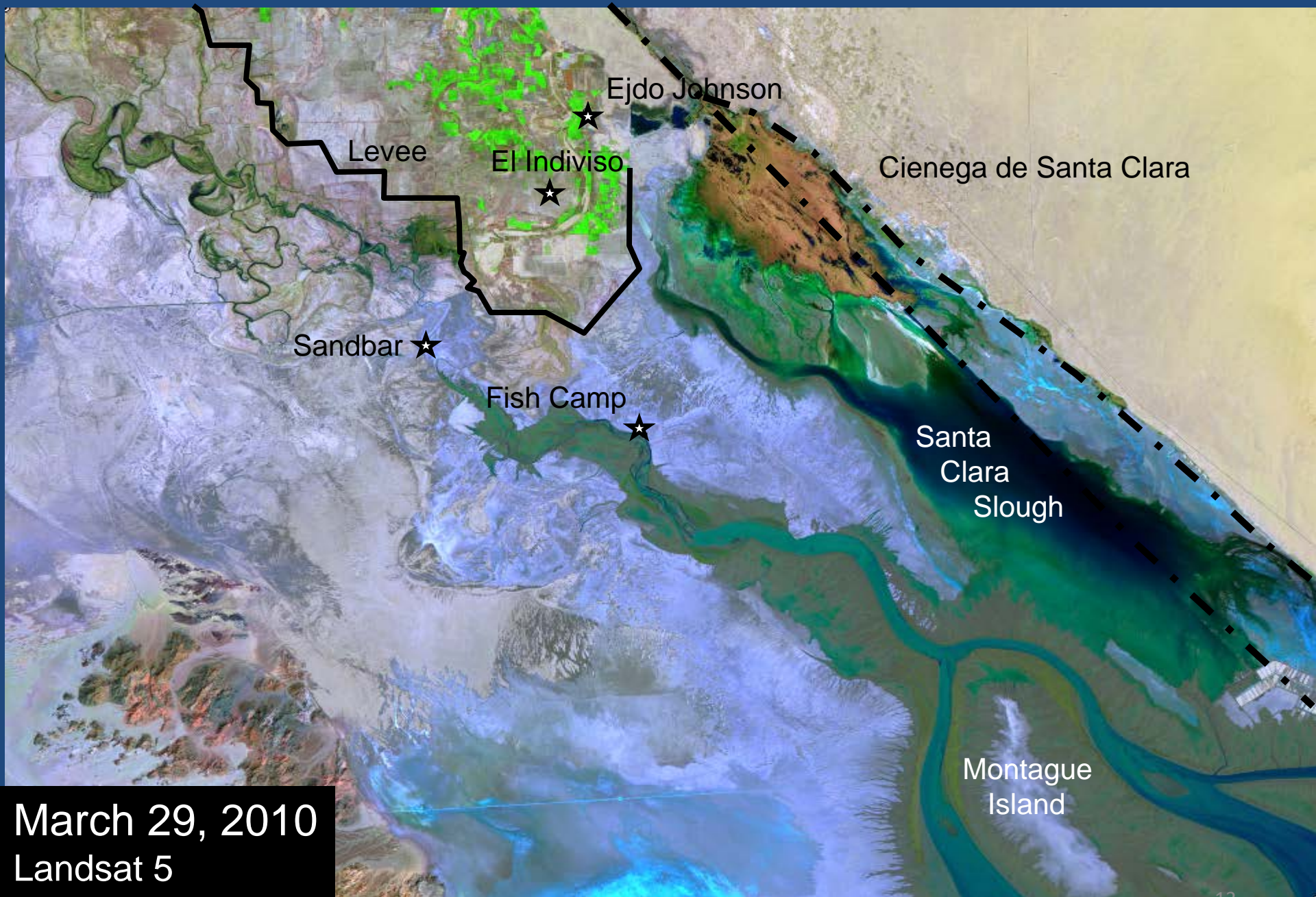
Landsat TM July 8, 2006

# El Mayor-Cucapah Earthquake

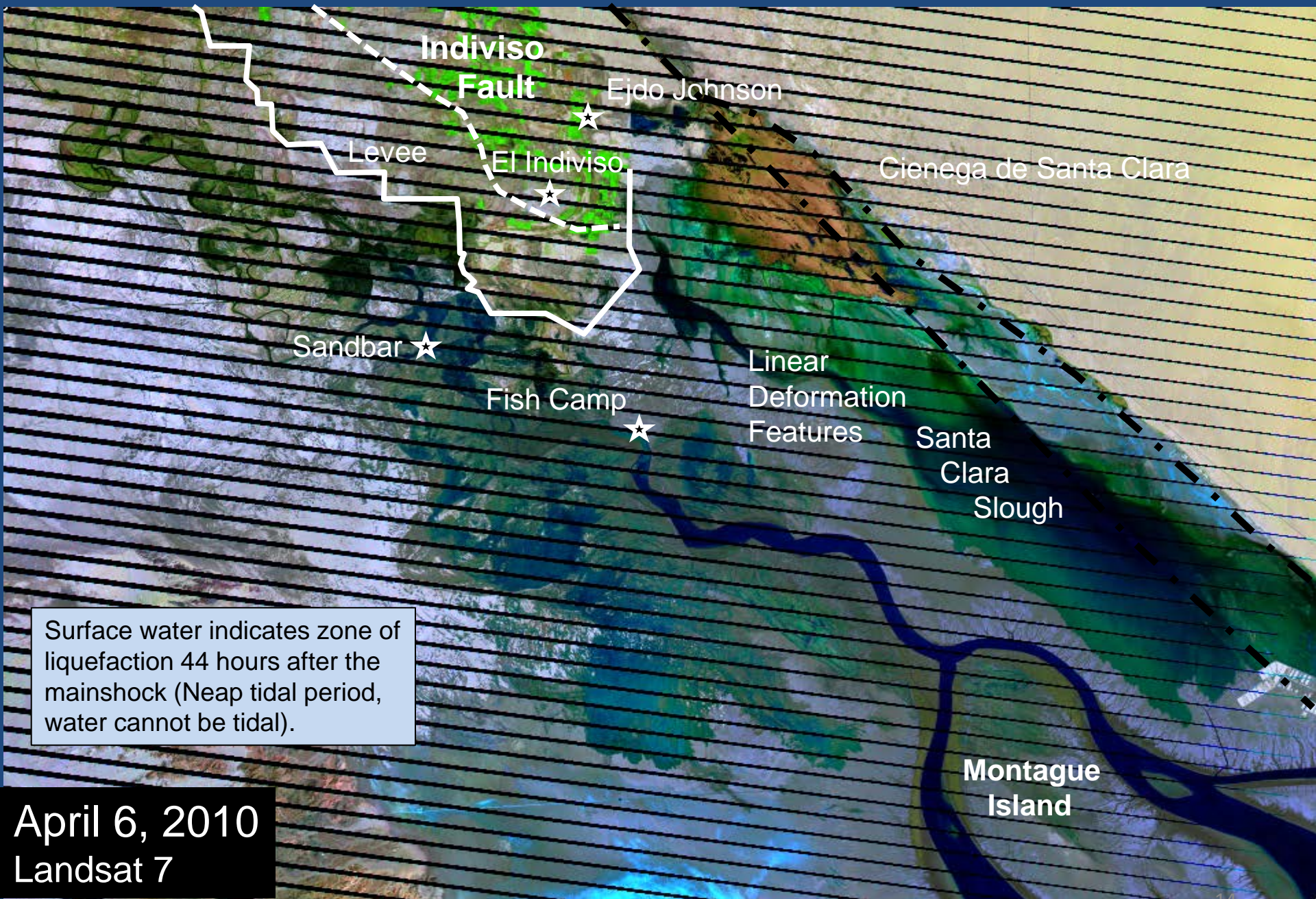
April 4, 2010  $M_w$  7.2





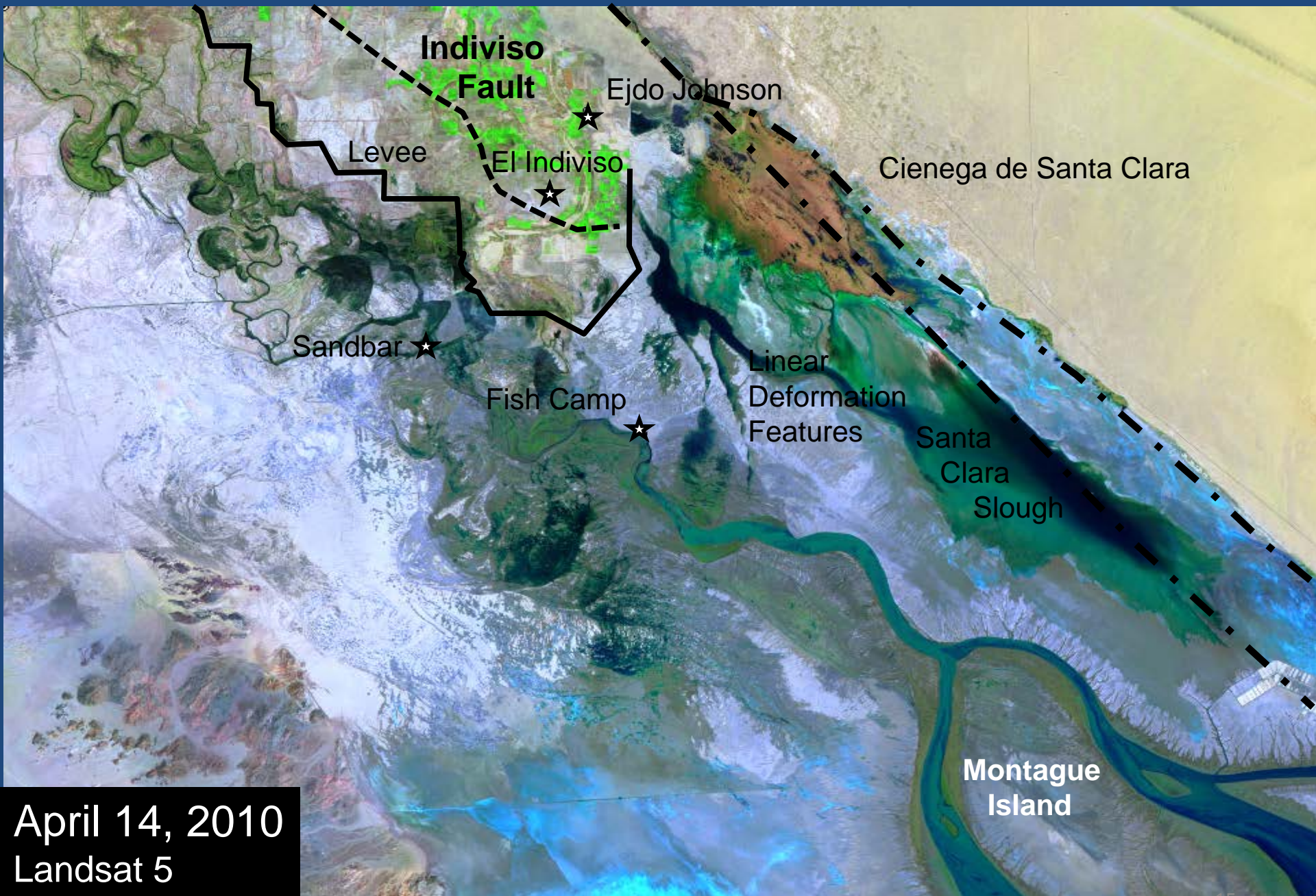






April 6, 2010  
Landsat 7





April 14, 2010  
Landsat 5



## At the tidal sandbar:



Before (August 2009)

El Mayor-Cucapah Earthquake  
April 4, 2010  $M_w$  7.2



After (July 2010)



Liquefaction at the sand bar, with subsided ground to the east, May 4, 2010

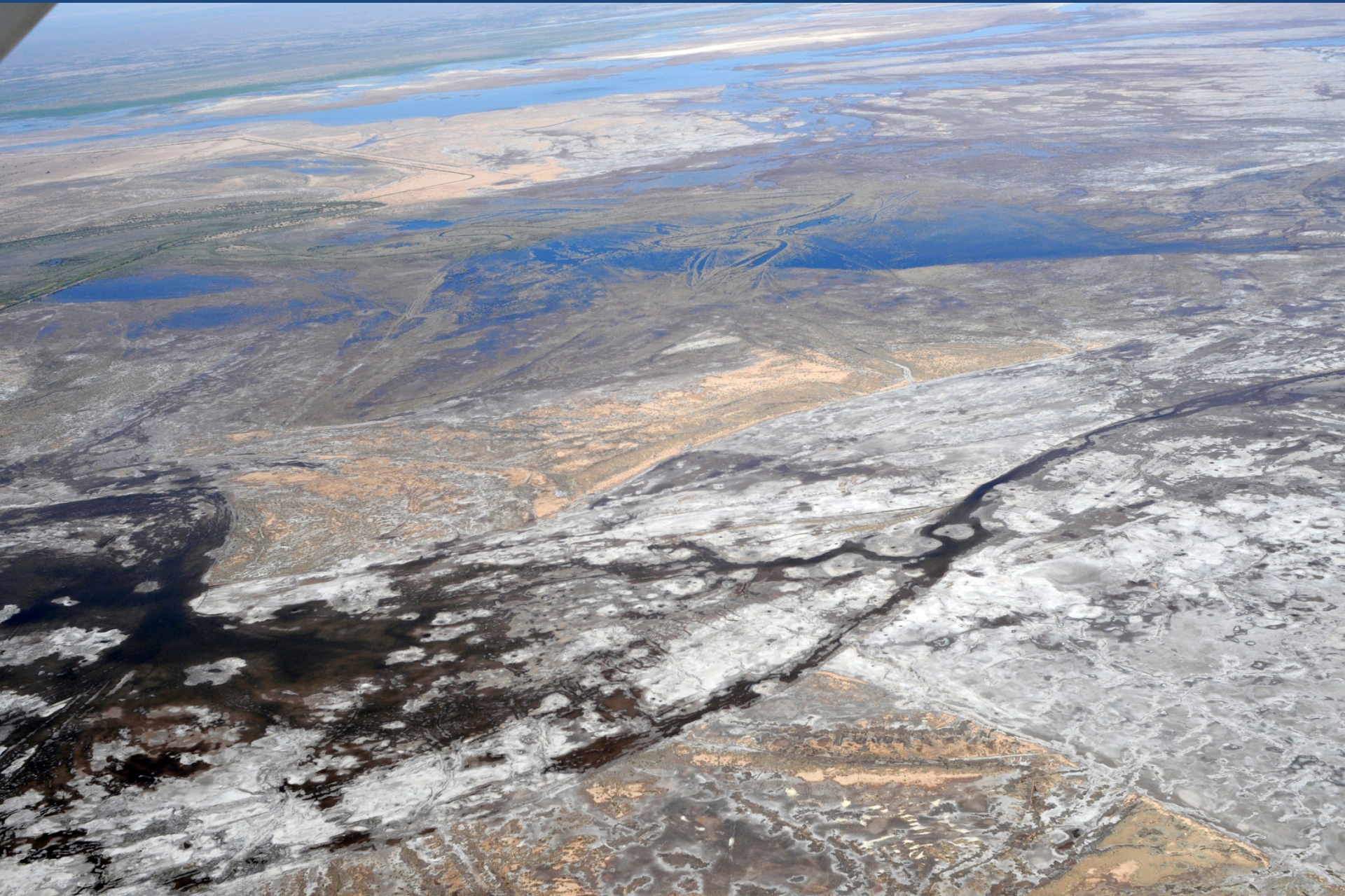


Photo by Francisco Zamora



How can surface deformation be better identified and measured?

## Interferometric Synthetic Aperture Radar!



ALOS-Palsar Interferogram prepared by Eric Fielding and posted on the Southern California Earthquake Data Center website, May 2010.

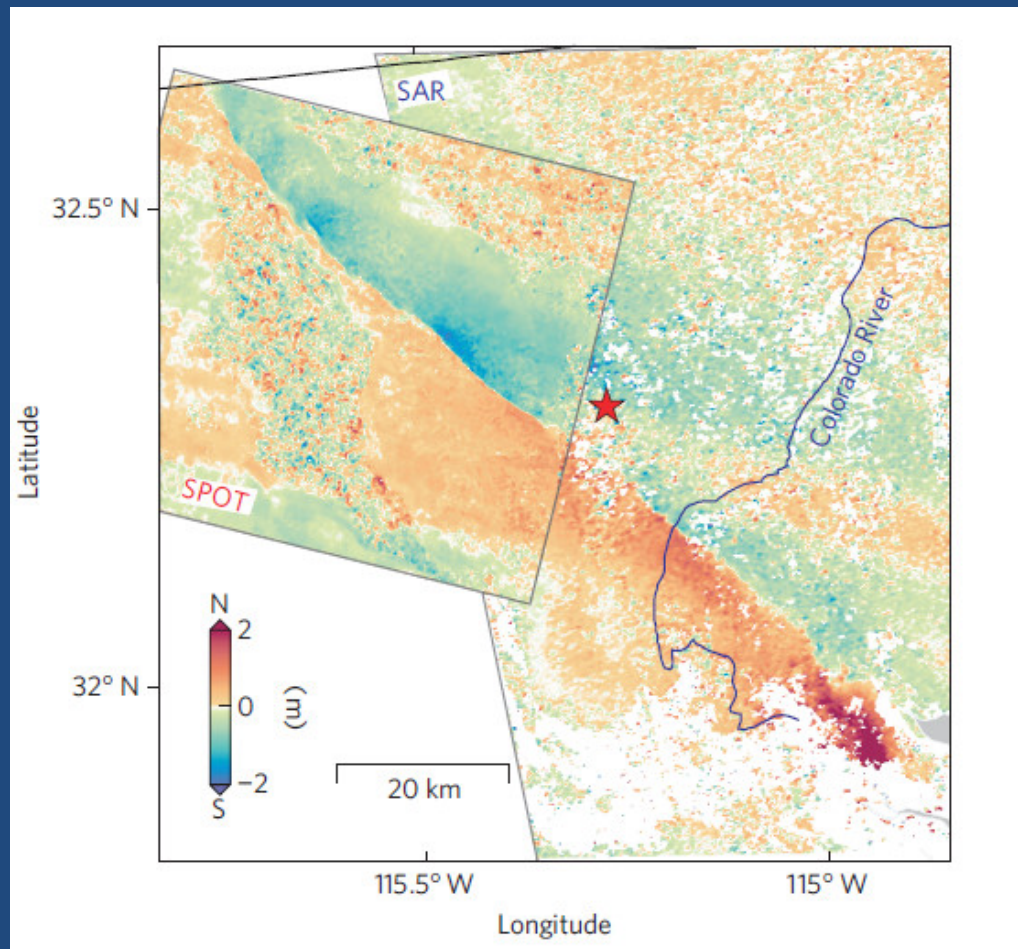


## Methods:

- **Landsat, ASTER, and MODIS imagery, overflights, and field monitoring visits:** To identify tectonic lineaments, and document tidal inundation changes (as an indicator of surface deformation)
- **Predicted tide heights:** Areas inundated by high tides of similar height as predicted by CICESE for Puerto Peñasco, Sonora were compared to provide a general indication of changes in land surface elevation over time.
- **Synthetic aperture radar pixel tracking:** To measure horizontal displacement
- **Interferometric synthetic aperture radar (InSAR) data analysis:** To measure vertical surface deformation



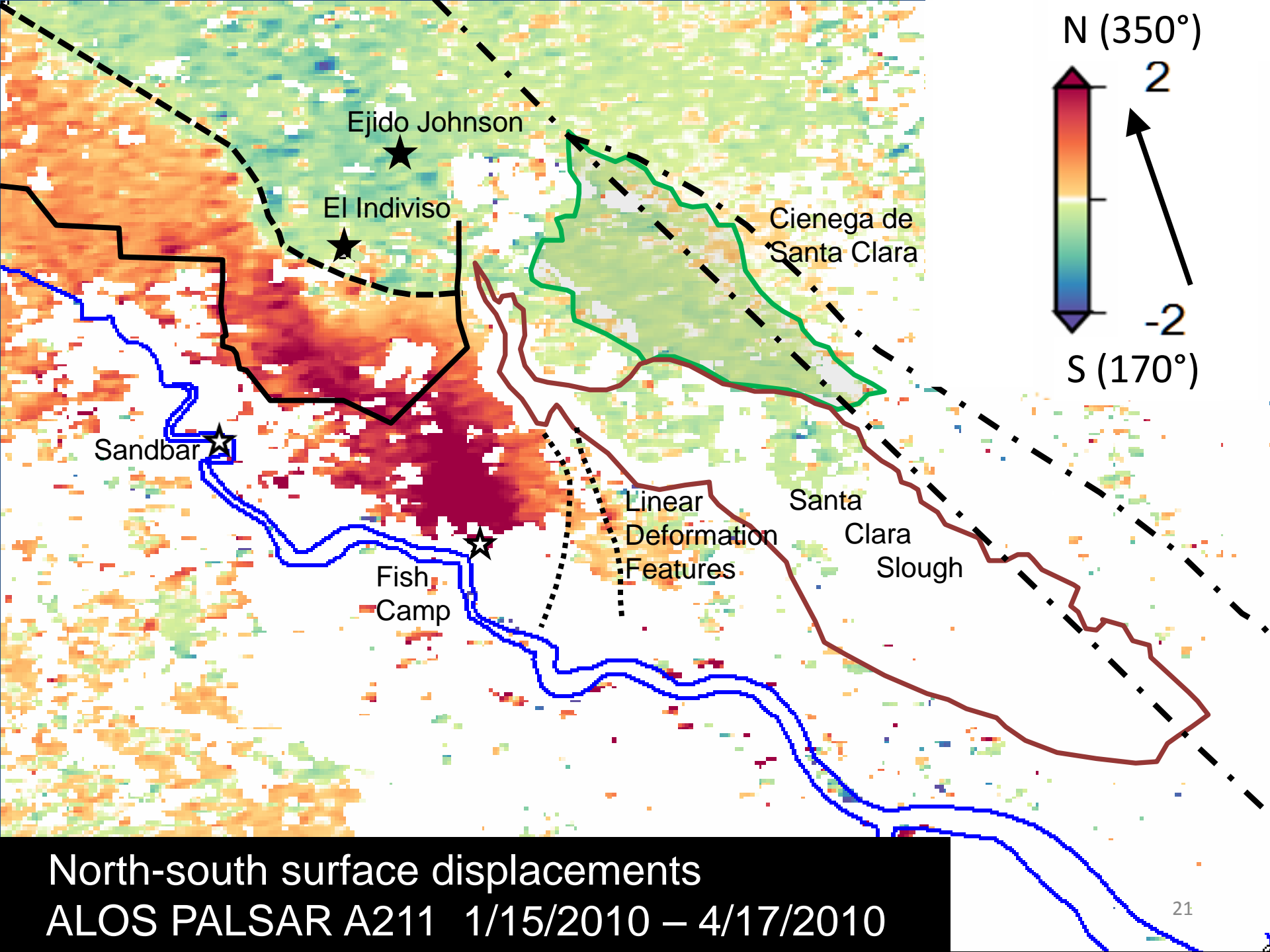




Near field coseismic ground displacement measured from subpixel correlation of SAR amplitude images and optical SPOT images acquired before and after the earthquake.

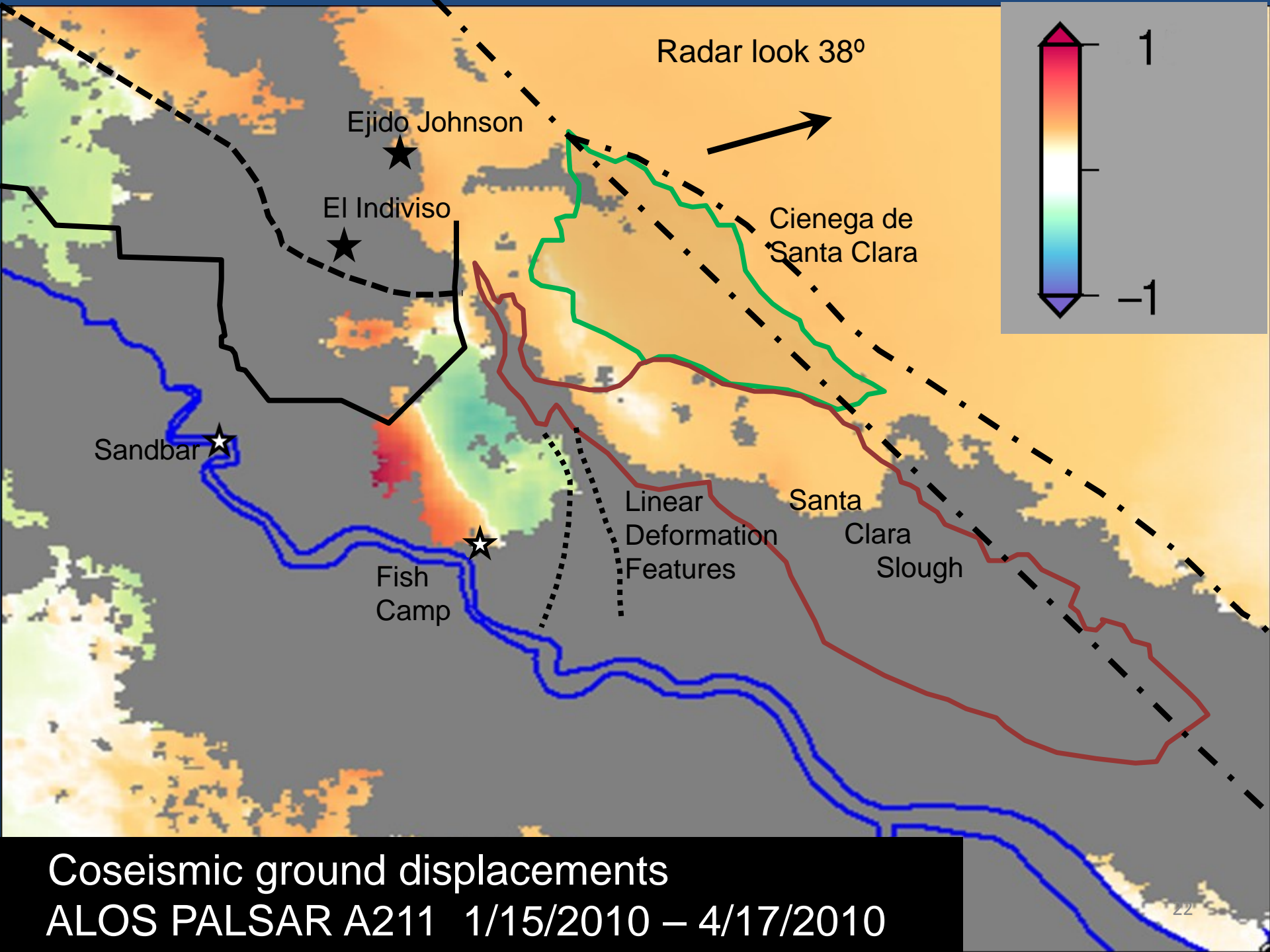
From Figure 2: Wei, S., Fielding, E., Leprince, S., Sladen, A., Avouac, J.-P., Helmberger, D., Hauksson, E., Risheng, C., Simons, M., Hudnut, K., Herring, T., Briggs, R., 2011. Superficial simplicity of the 2010 El Mayor–Cucapah earthquake of Baja California in Mexico. *Nat. Geosci.* 4, 615-618.





North-south surface displacements  
ALOS PALSAR A211 1/15/2010 – 4/17/2010





Radar look 38°

Ejido Johnson

El Indiviso

Cienega de Santa Clara

Sandbar

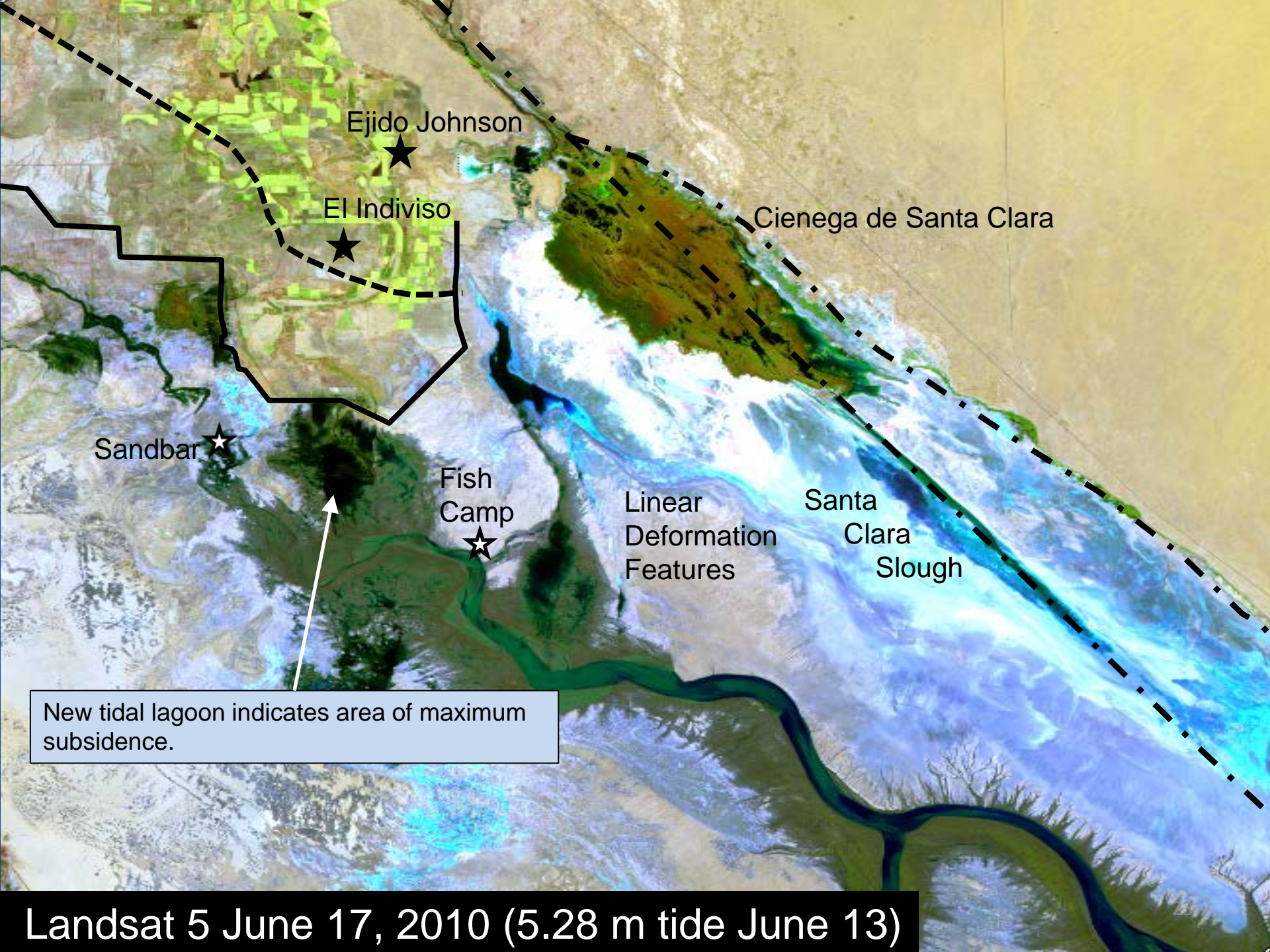
Fish Camp

Linear Deformation Features

Santa Clara Slough

Coseismic ground displacements  
ALOS PALSAR A211 1/15/2010 – 4/17/2010





Ejido Johnson



El Indiviso



Cienega de Santa Clara

Sandbar



Fish  
Camp



Linear  
Deformation  
Features

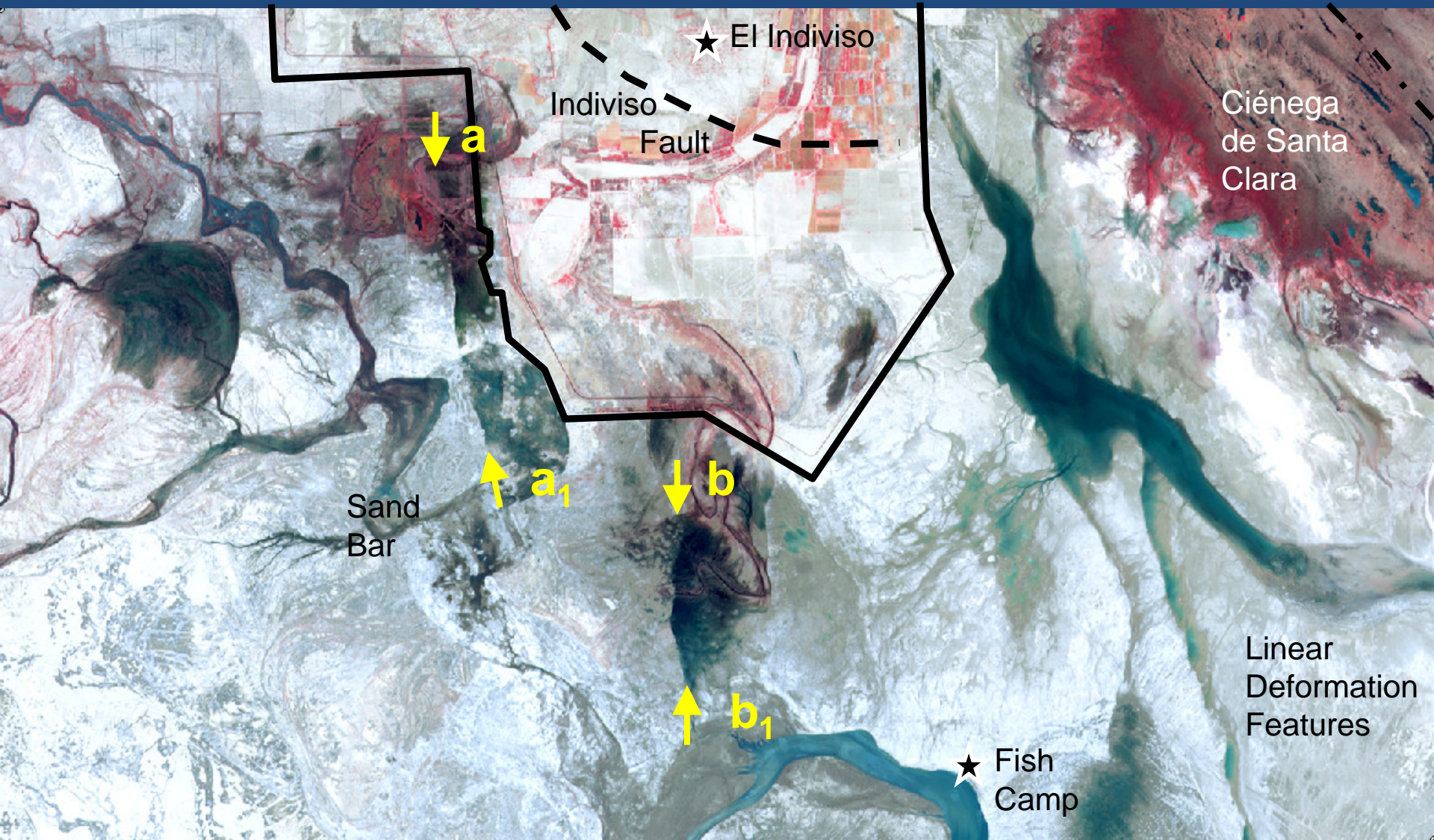
Santa  
Clara  
Slough

New tidal lagoon indicates area of maximum subsidence.

Landsat 5 June 17, 2010 (5.28 m tide June 13)

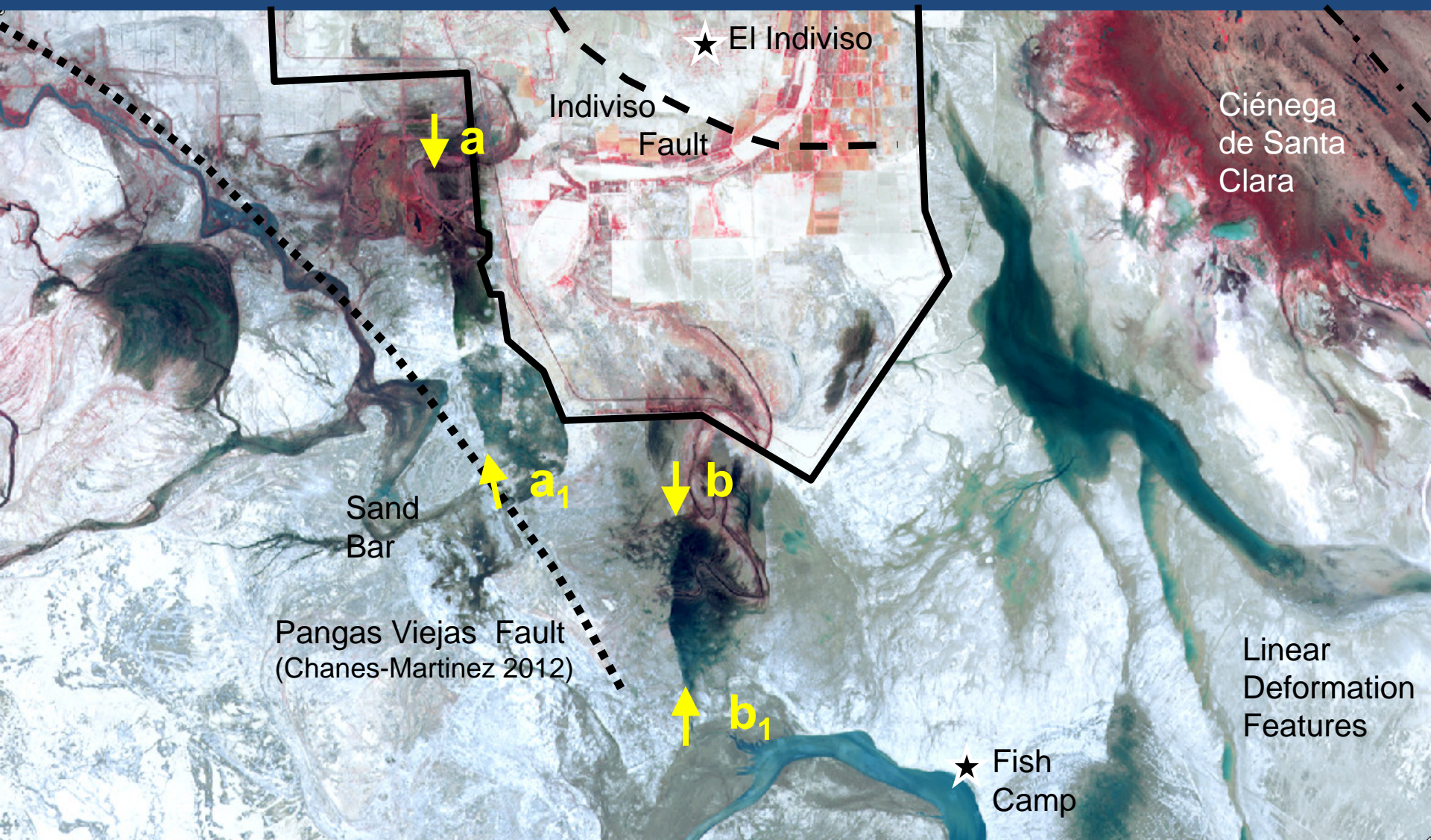


# Lineaments



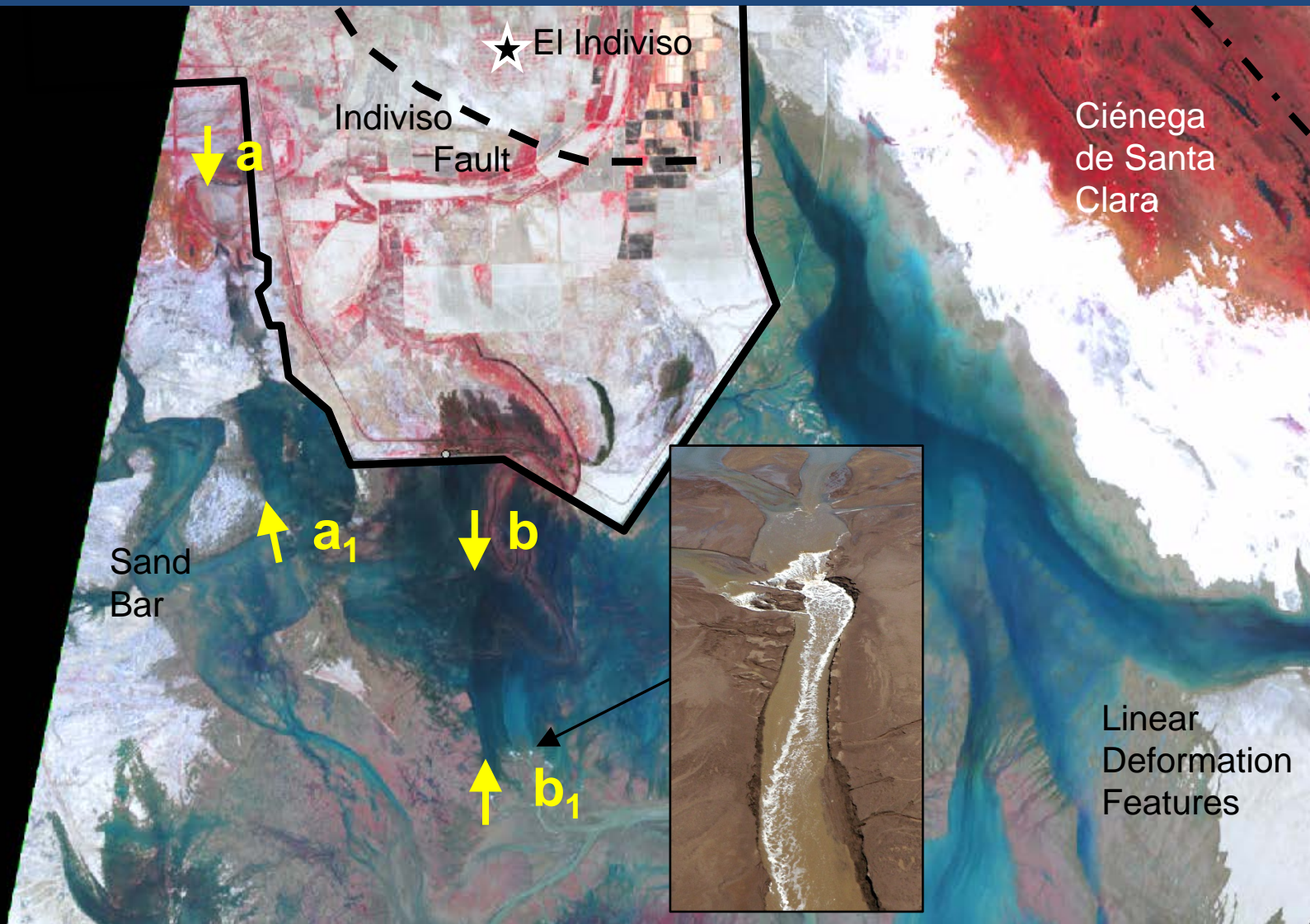


## Lineaments



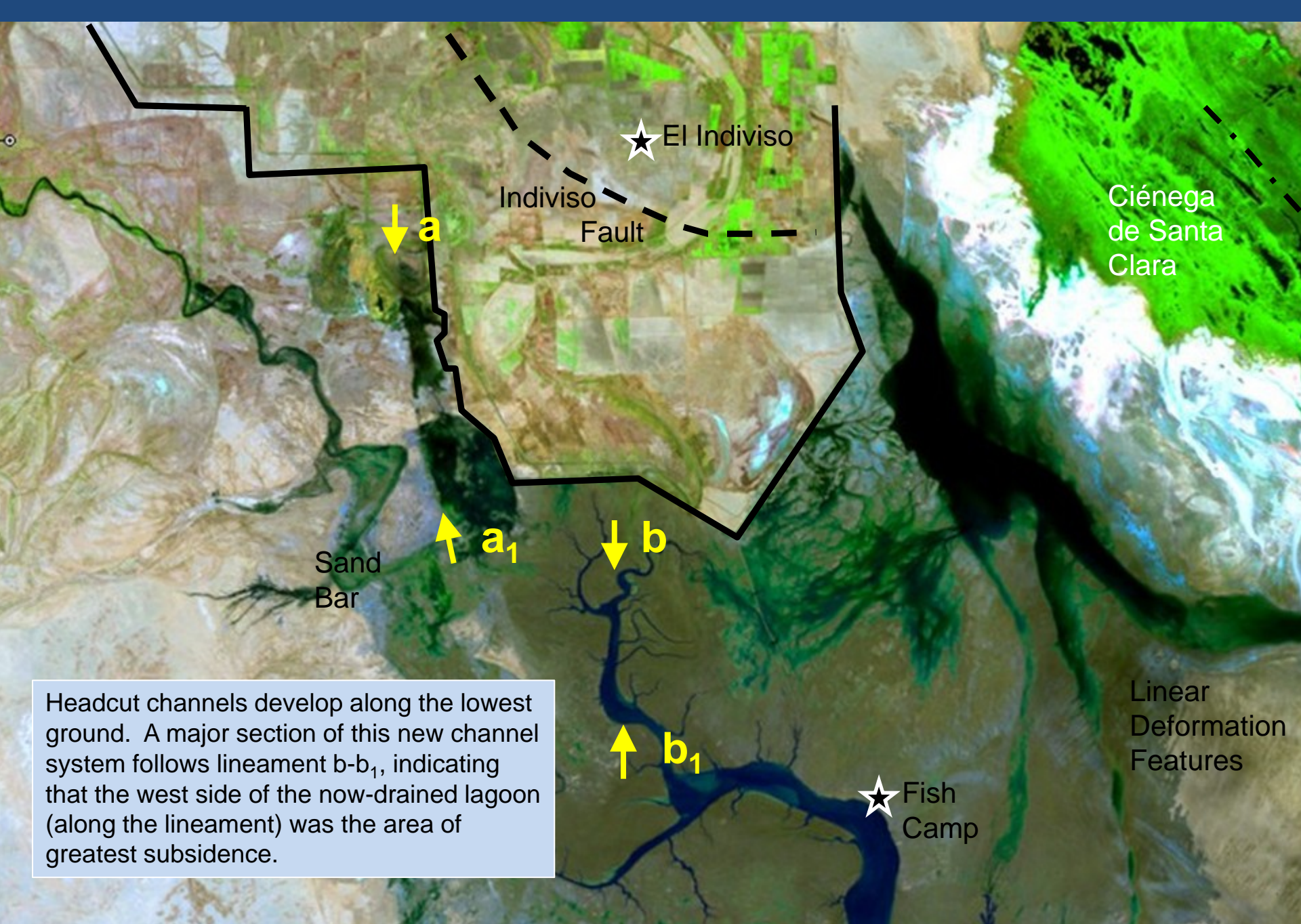
Chanes-Martínez, J.J. 2012. Características estructurales y sismoestratigráficas en un sector del delta del Río Colorado, noroeste de México, a partir de sísmica de reflexión. Centro de Investigación Científica y de Educación Superior de Ensenada, Departamento de la Ciencias de la Tierra, Ensenada.





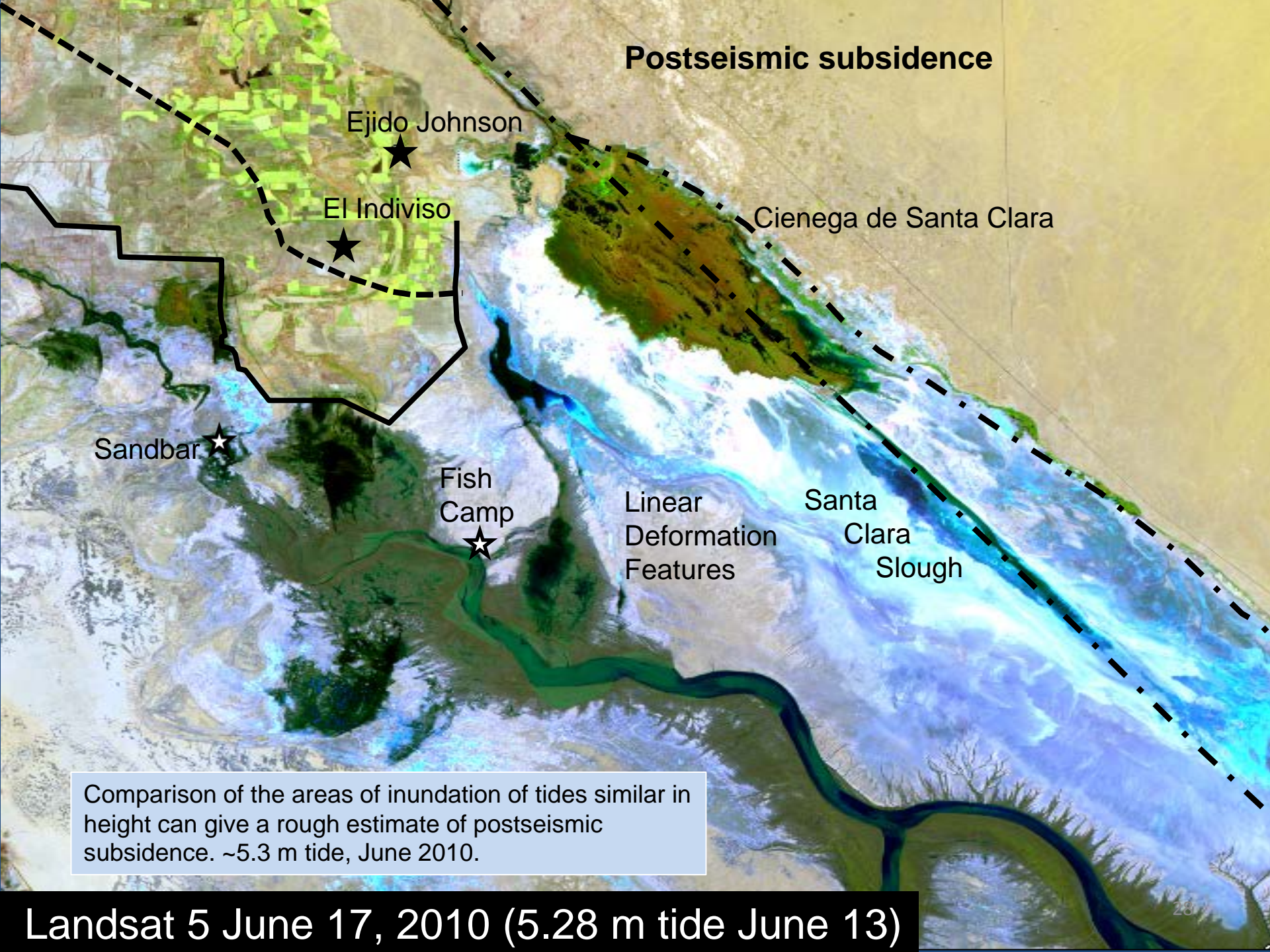
Tidal drainage from newly subsided ground resulted in headcut erosion of new tidal channels in the subsided areas.





Headcut channels develop along the lowest ground. A major section of this new channel system follows lineament b-b<sub>1</sub>, indicating that the west side of the now-drained lagoon (along the lineament) was the area of greatest subsidence.





**Postseismic subsidence**

Ejido Johnson

El Indiviso

Cienega de Santa Clara

Sandbar

Fish  
Camp

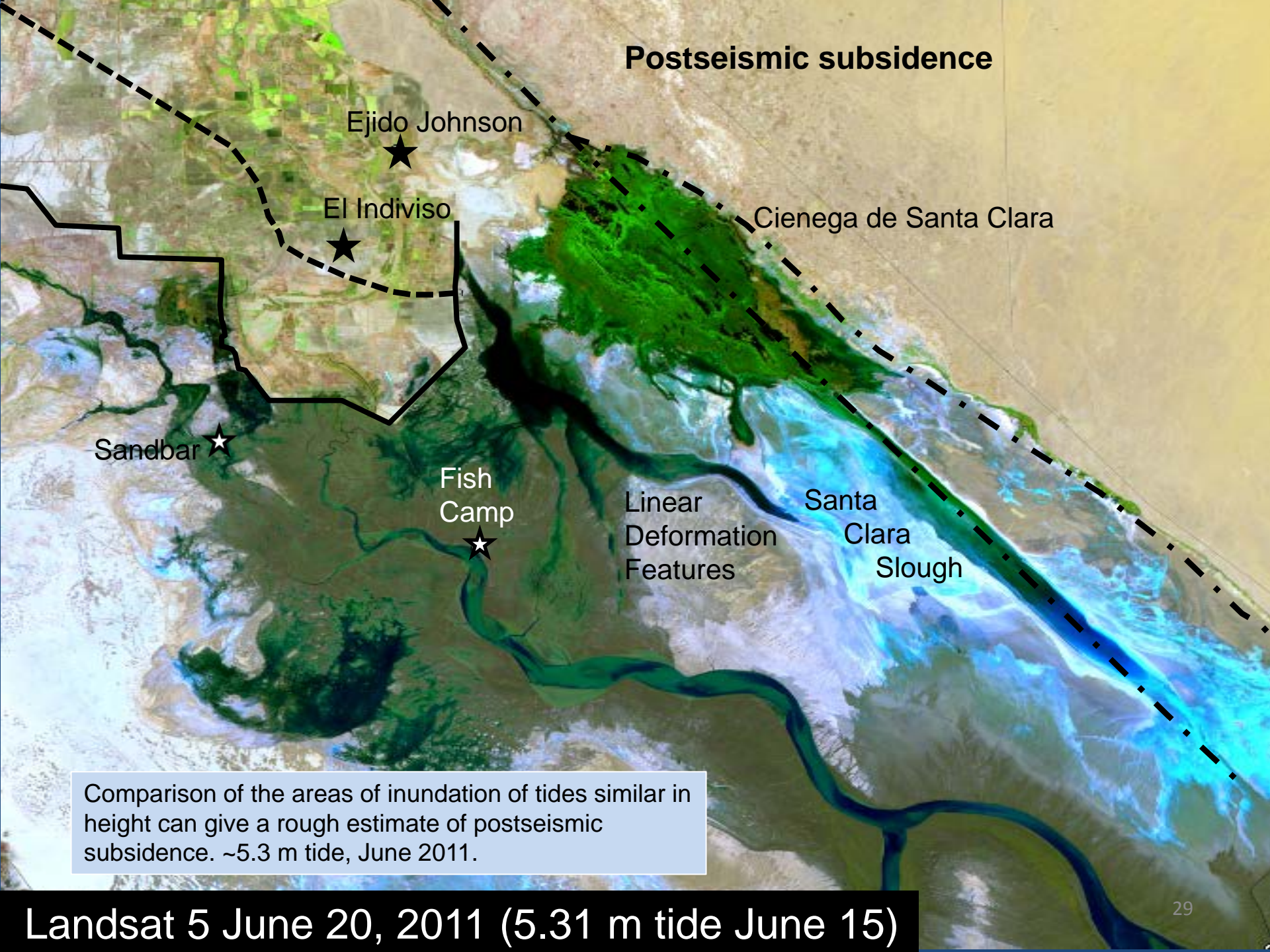
Linear  
Deformation  
Features

Santa  
Clara  
Slough

Comparison of the areas of inundation of tides similar in height can give a rough estimate of postseismic subsidence. ~5.3 m tide, June 2010.

**Landsat 5 June 17, 2010 (5.28 m tide June 13)**





**Postseismic subsidence**

Ejido Johnson

El Indiviso

Cienega de Santa Clara

Sandbar

Fish  
Camp

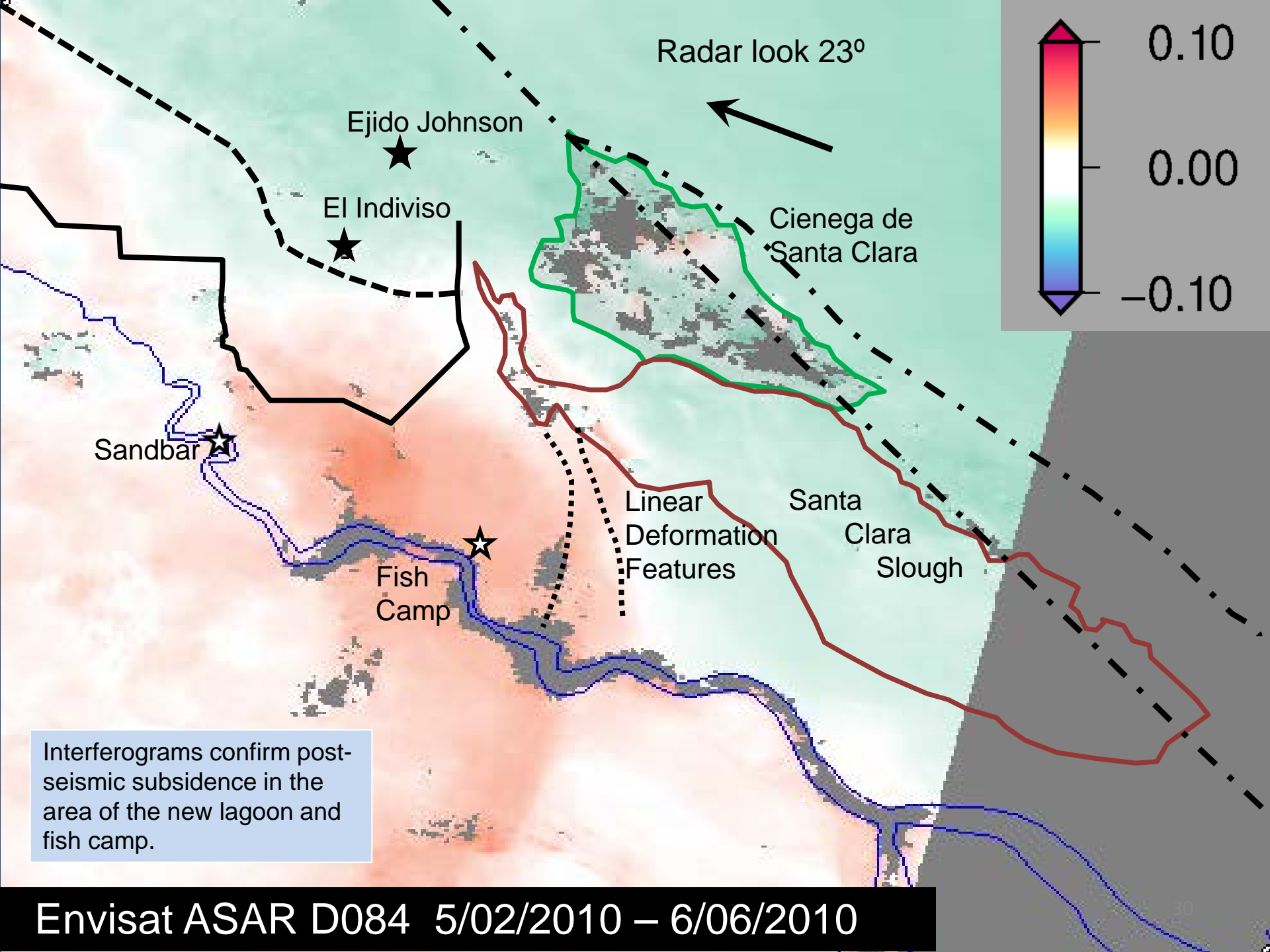
Linear  
Deformation  
Features

Santa  
Clara  
Slough

Comparison of the areas of inundation of tides similar in height can give a rough estimate of postseismic subsidence. ~5.3 m tide, June 2011.

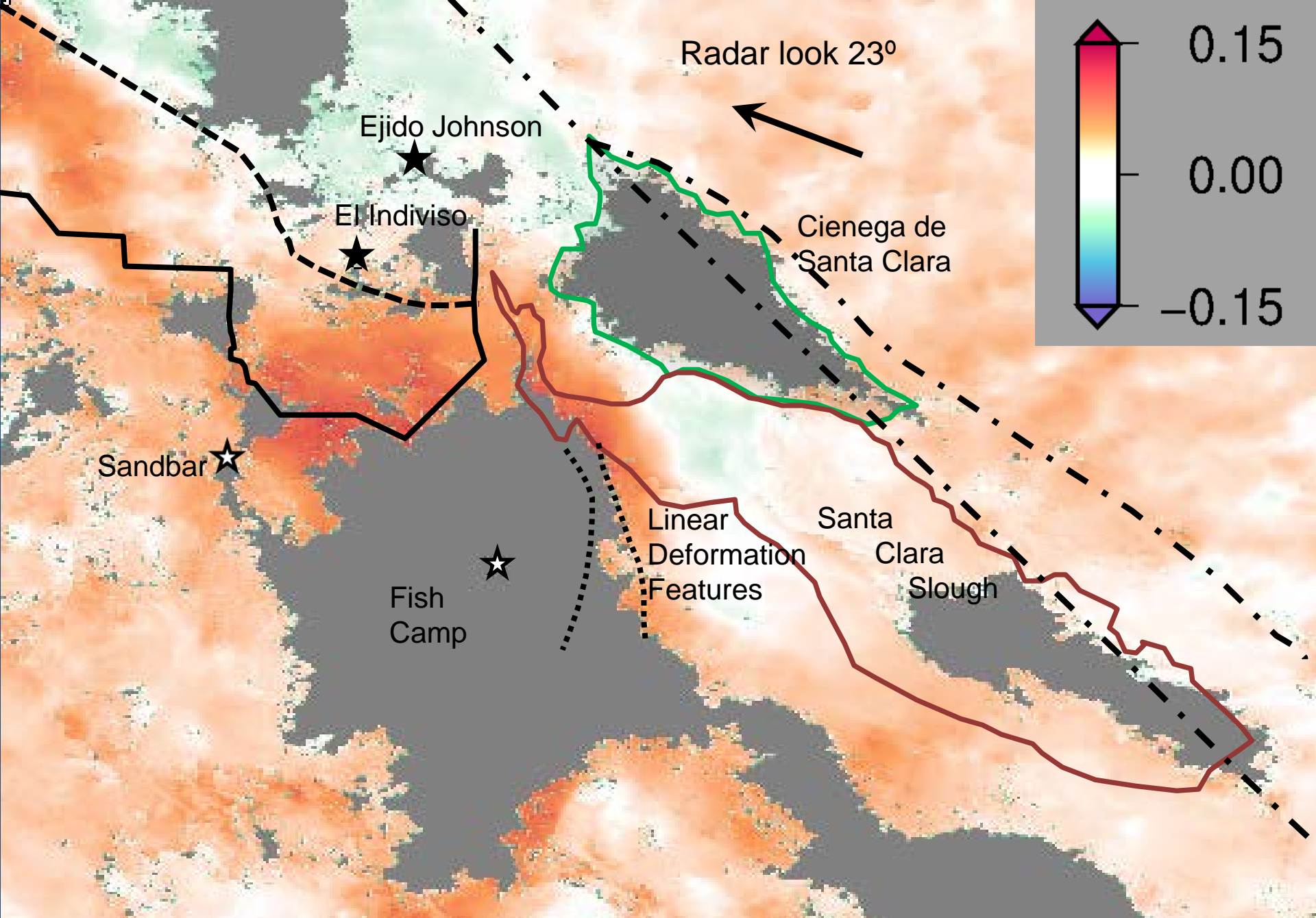
**Landsat 5 June 20, 2011 (5.31 m tide June 15)**





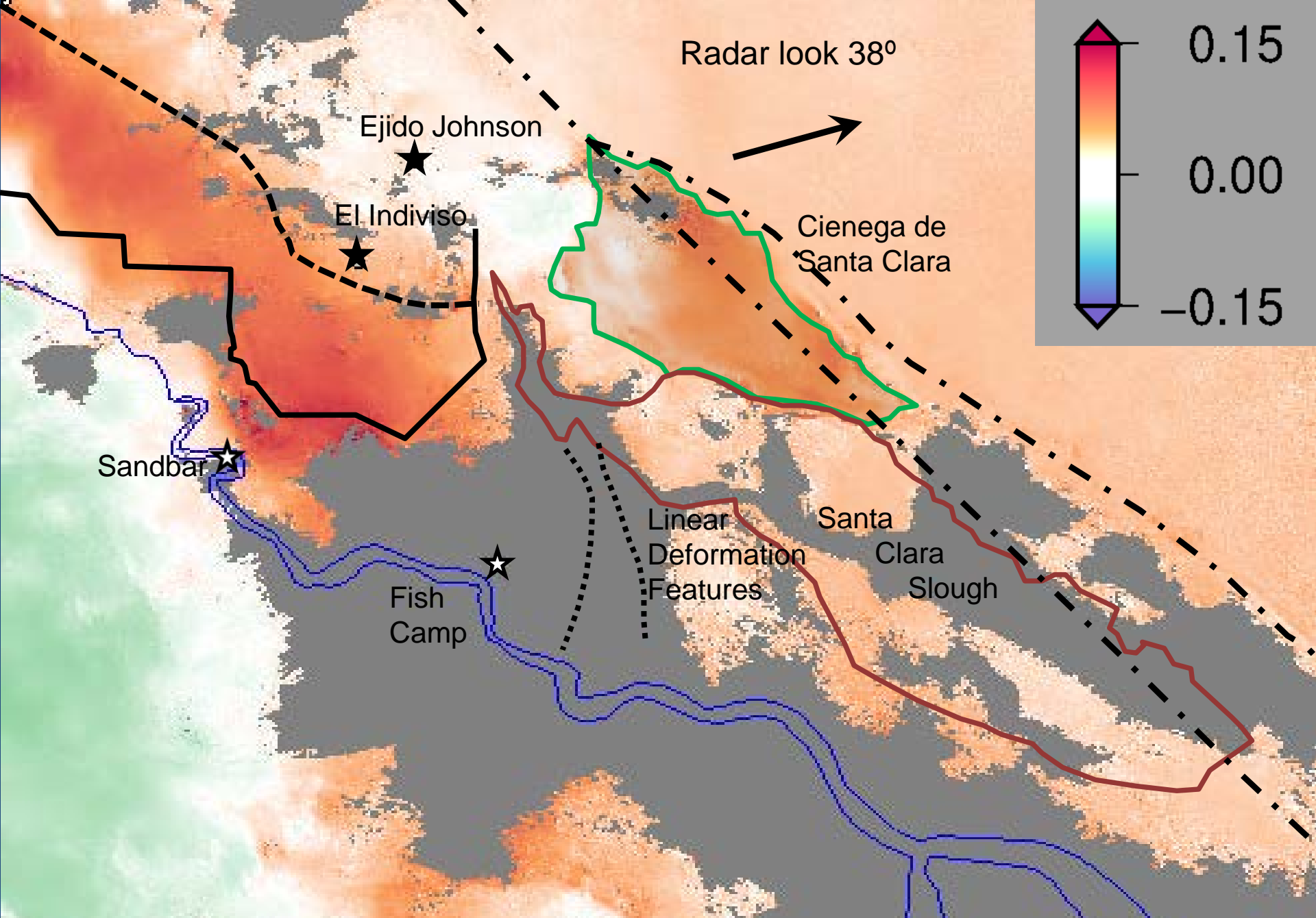
Envisat ASAR D084 5/02/2010 – 6/06/2010





Envisat ASAR D313 4/13/2010 – 8/31/2010





ALOS PALSAR A211 4/17/2010 – 12/03/2010



Prior to the earthquake, it was possible to drive to the fish camp directly on the surface of the normally-dry tidal mudflats. After the earthquake the area was inundated by the spring tides almost every month, and a causeway had to be built to provide fishing access.



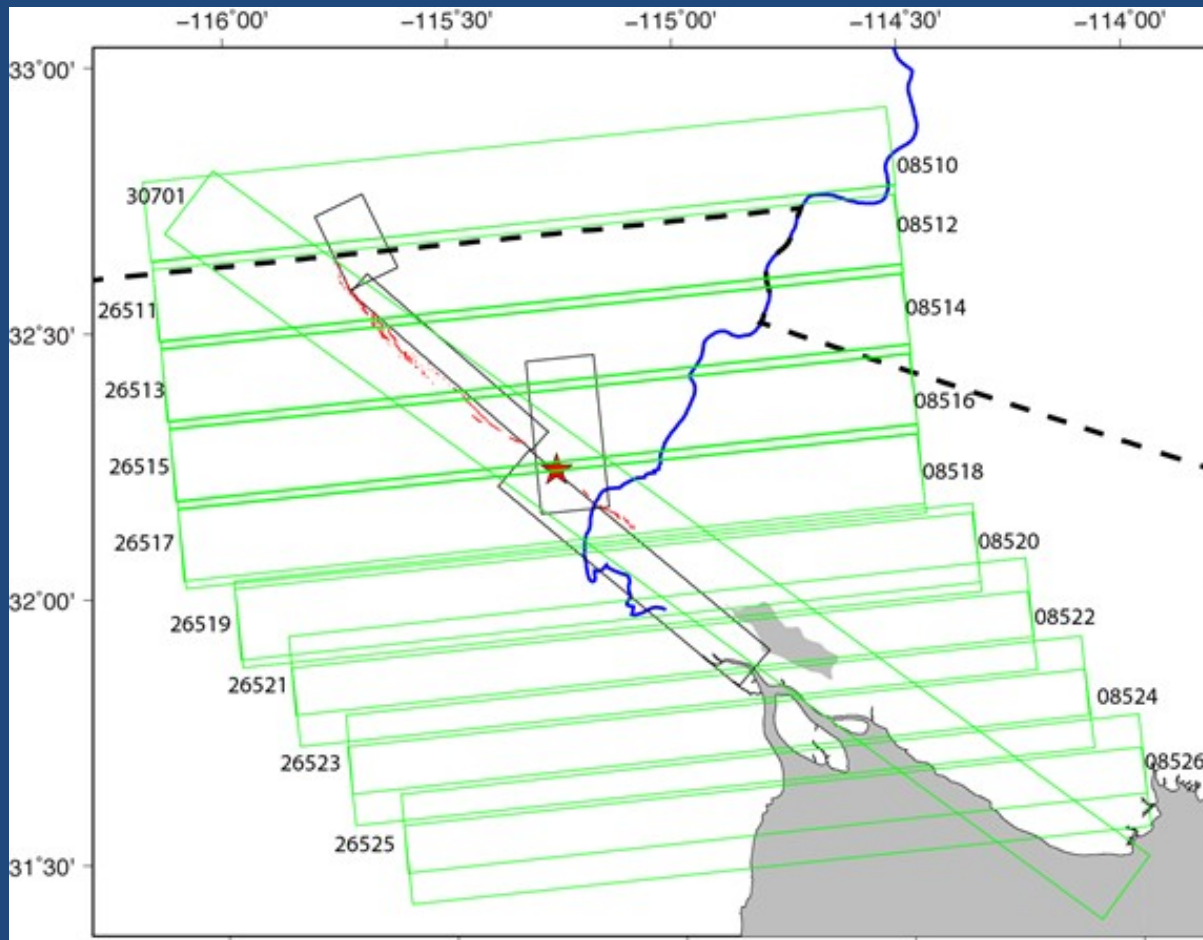
Causeway to fish camp, March 10, 2012





Causeway to fish camp, August 2, 2012 5.51m spring tide



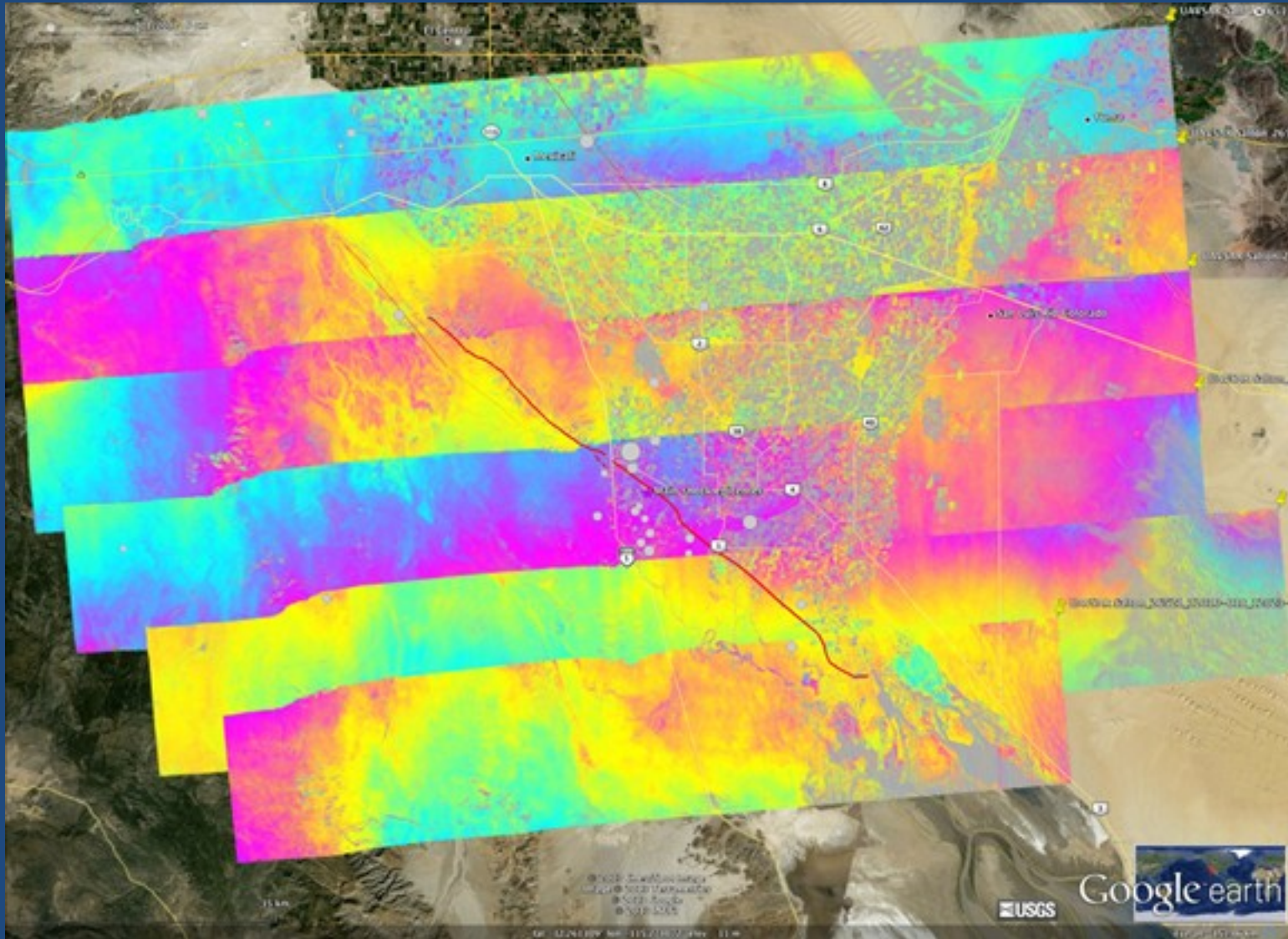


UAVSAR Flight Lines, Mexico Earthquake Study

The UAVSAR Mexico Earthquake Study combines InSAR analysis of satellite and airborne radar imagery with Global Positioning System (GPS) analysis to estimate the distribution of coseismic fault ruptures, and to measure the postseismic deformation.



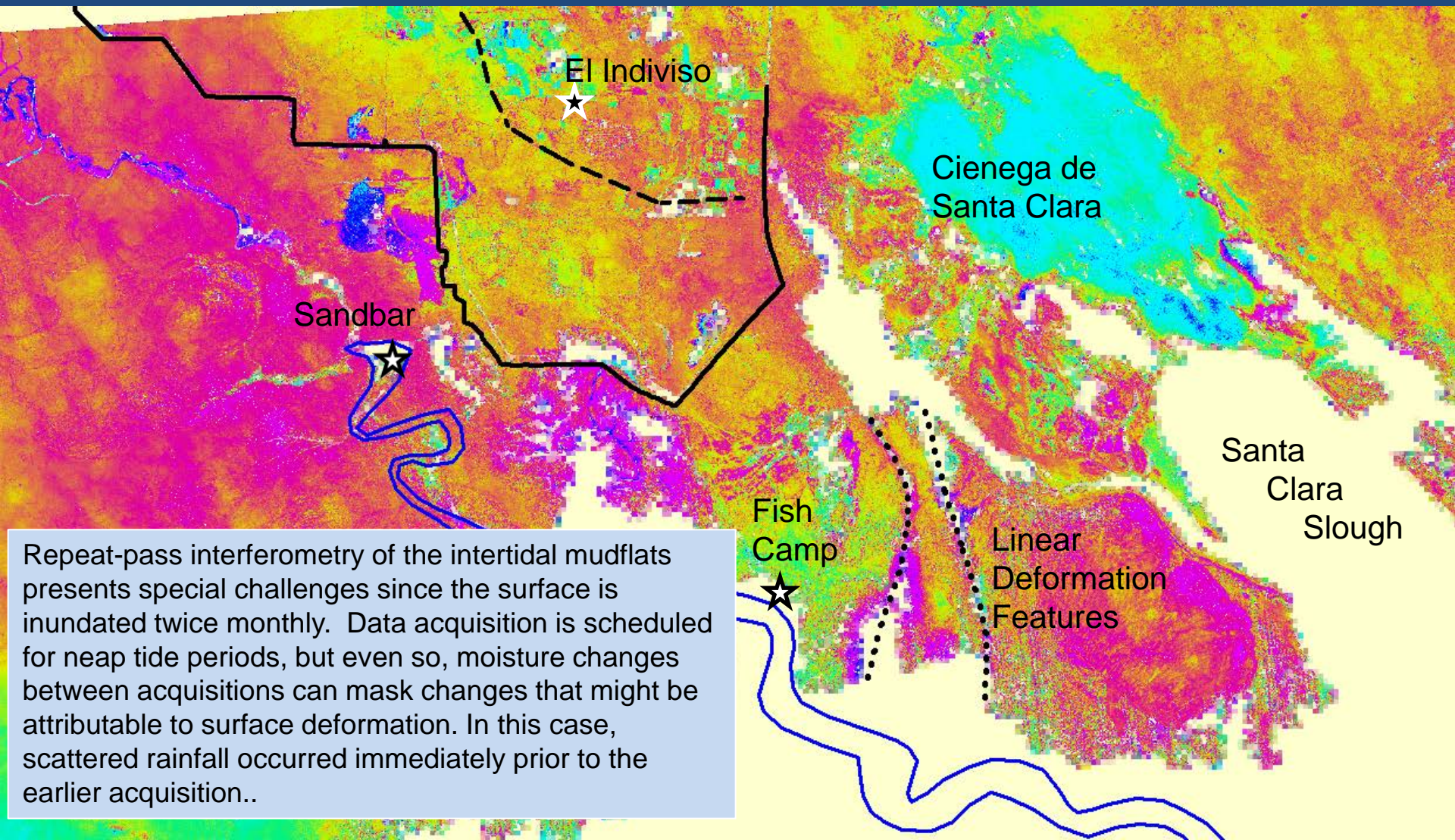
# UAVSAR products: repeat-pass interferometry (RPI) (two dates)



RPI interferograms from the February and May 2012 UAVSAR data. Wrapped interferogram phase is shown over base imagery from Google Earth sources. Thick red line is main surface rupture (Wei et. al 2011). Gray circles are 2010 El Mayor-Cucapah mainshock (largest) and aftershocks from the USGS NEIC.



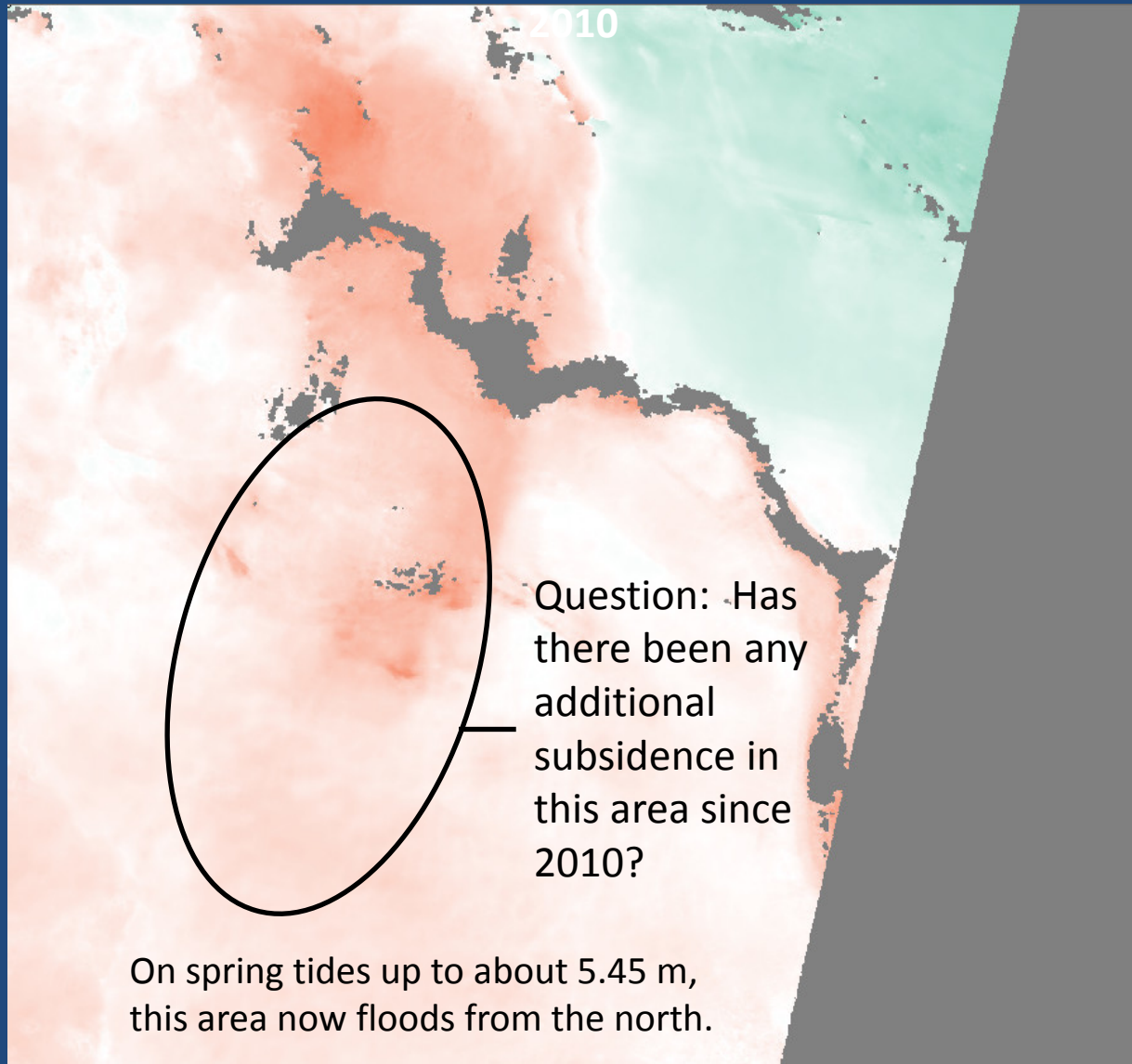
# UAVSAR repeat-pass interferometry (RPI)



Repeat-pass interferometry of the intertidal mudflats presents special challenges since the surface is inundated twice monthly. Data acquisition is scheduled for neap tide periods, but even so, moisture changes between acquisitions can mask changes that might be attributable to surface deformation. In this case, scattered rainfall occurred immediately prior to the earlier acquisition..

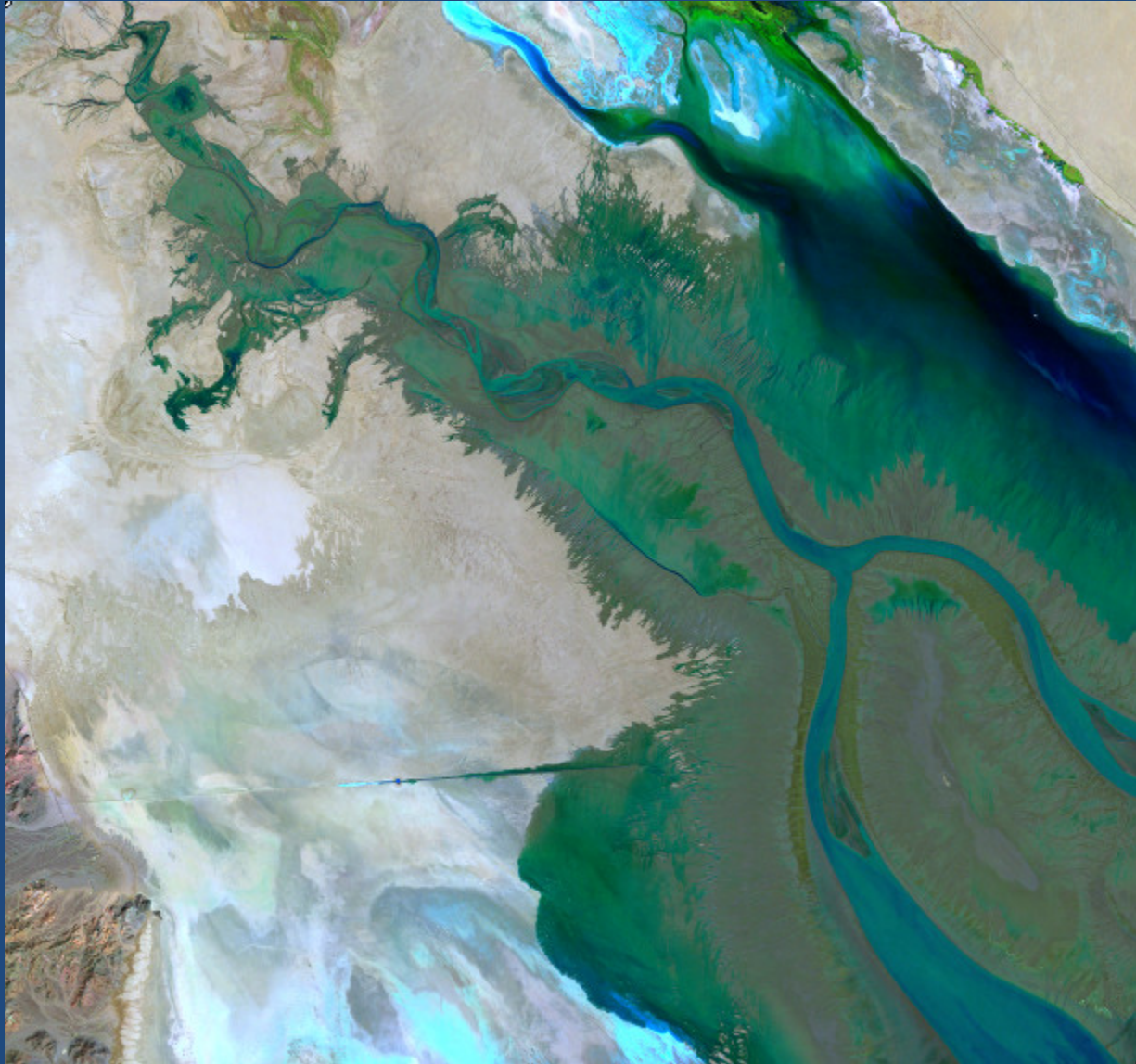


## Envisat D084 post-seismic interferogram May-June





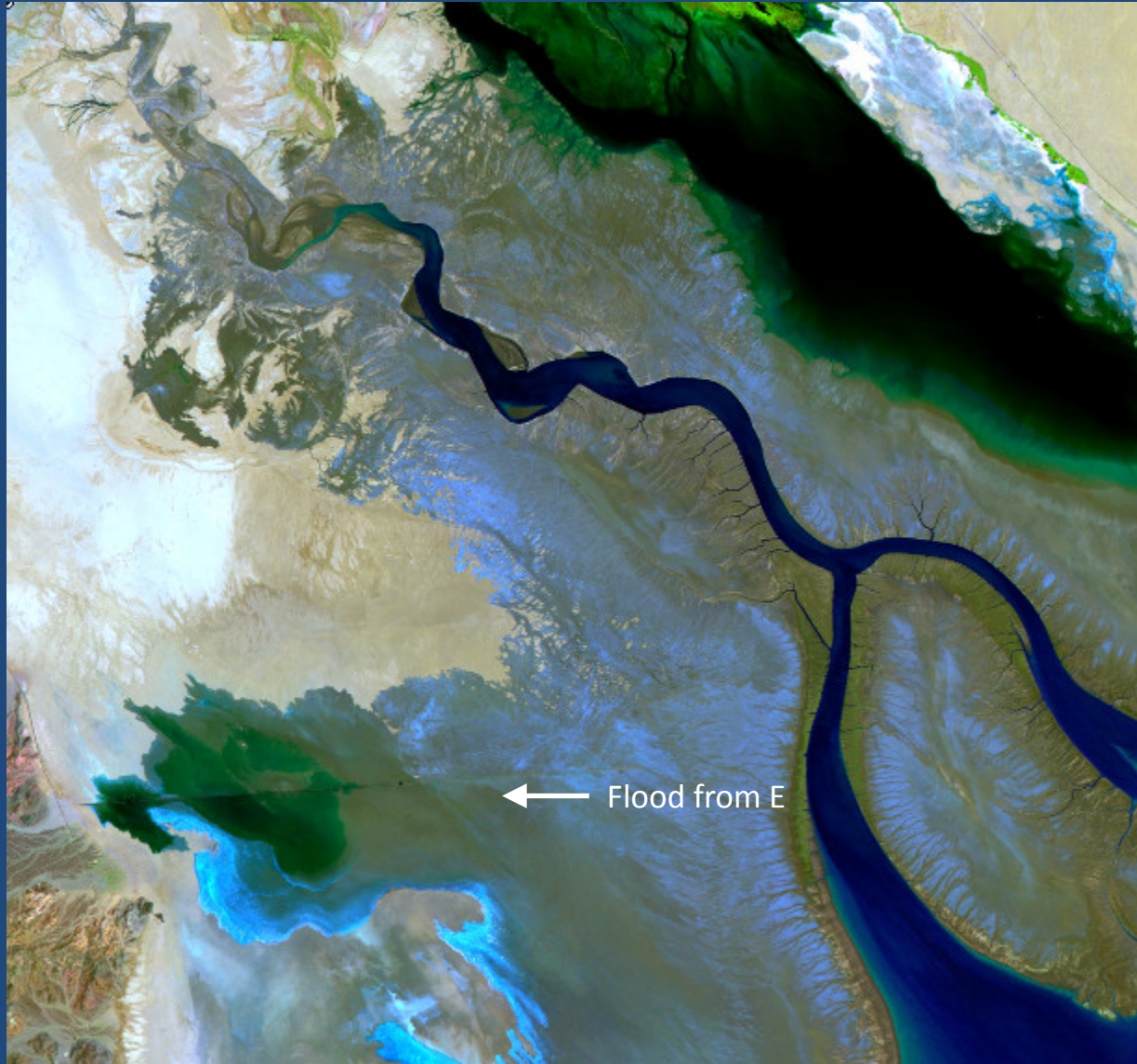
September 29, 2009    5.60m (Sept 28)    Pre-earthquake





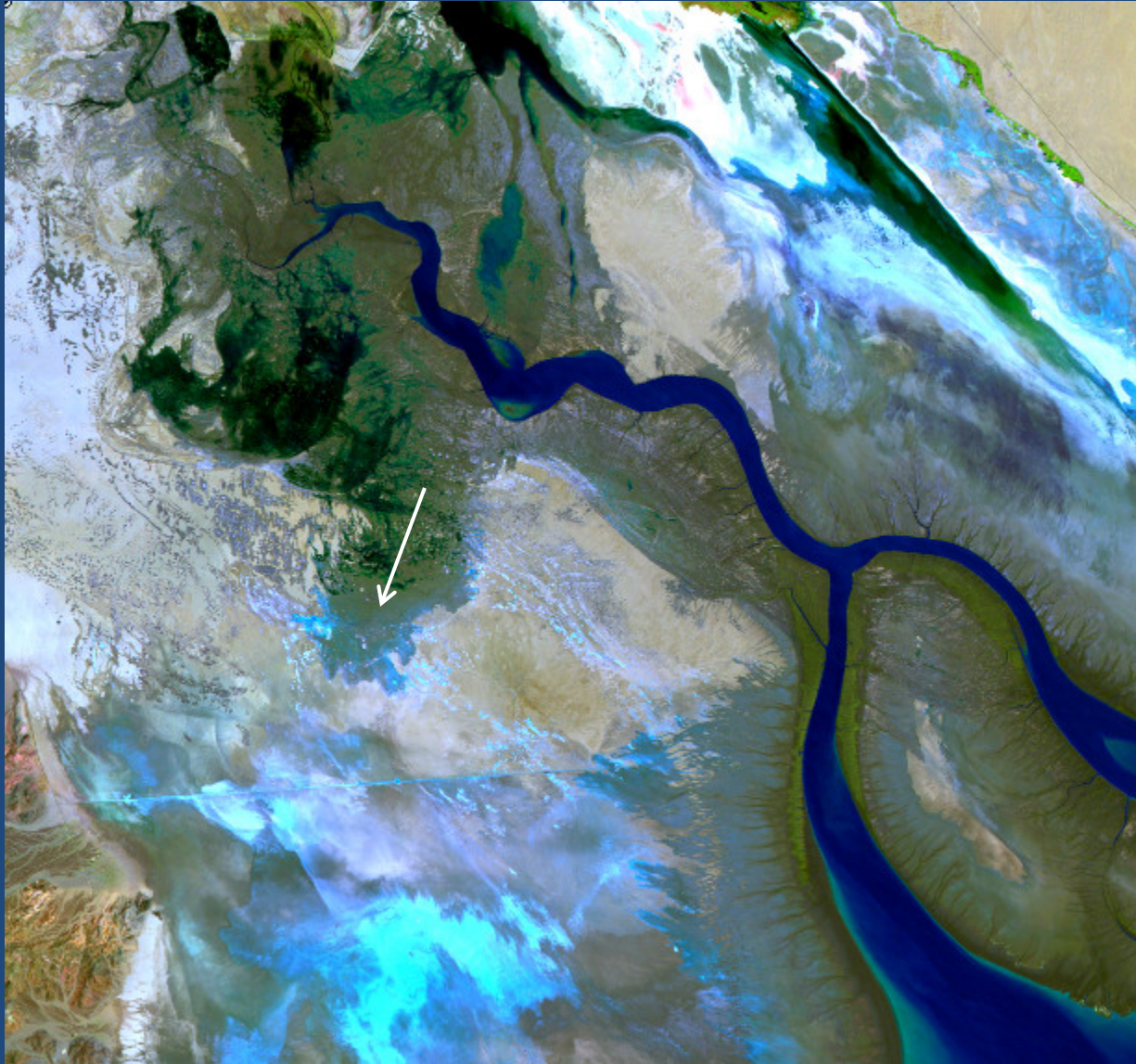
August 1, 2009

5.81m (July 22) Pre-earthquake



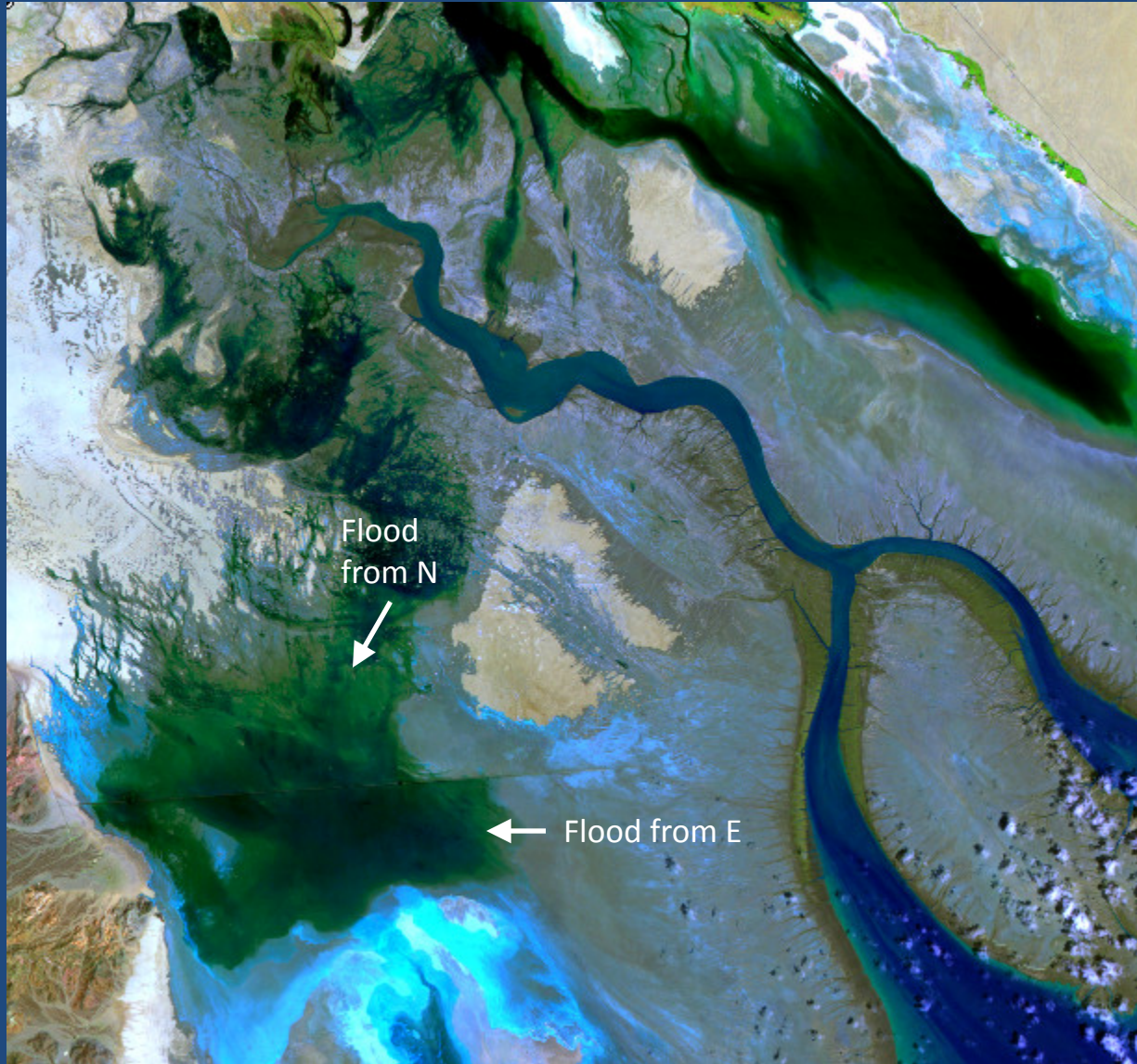


July 19, 2010 5.64m (July 12) Post-earthquake



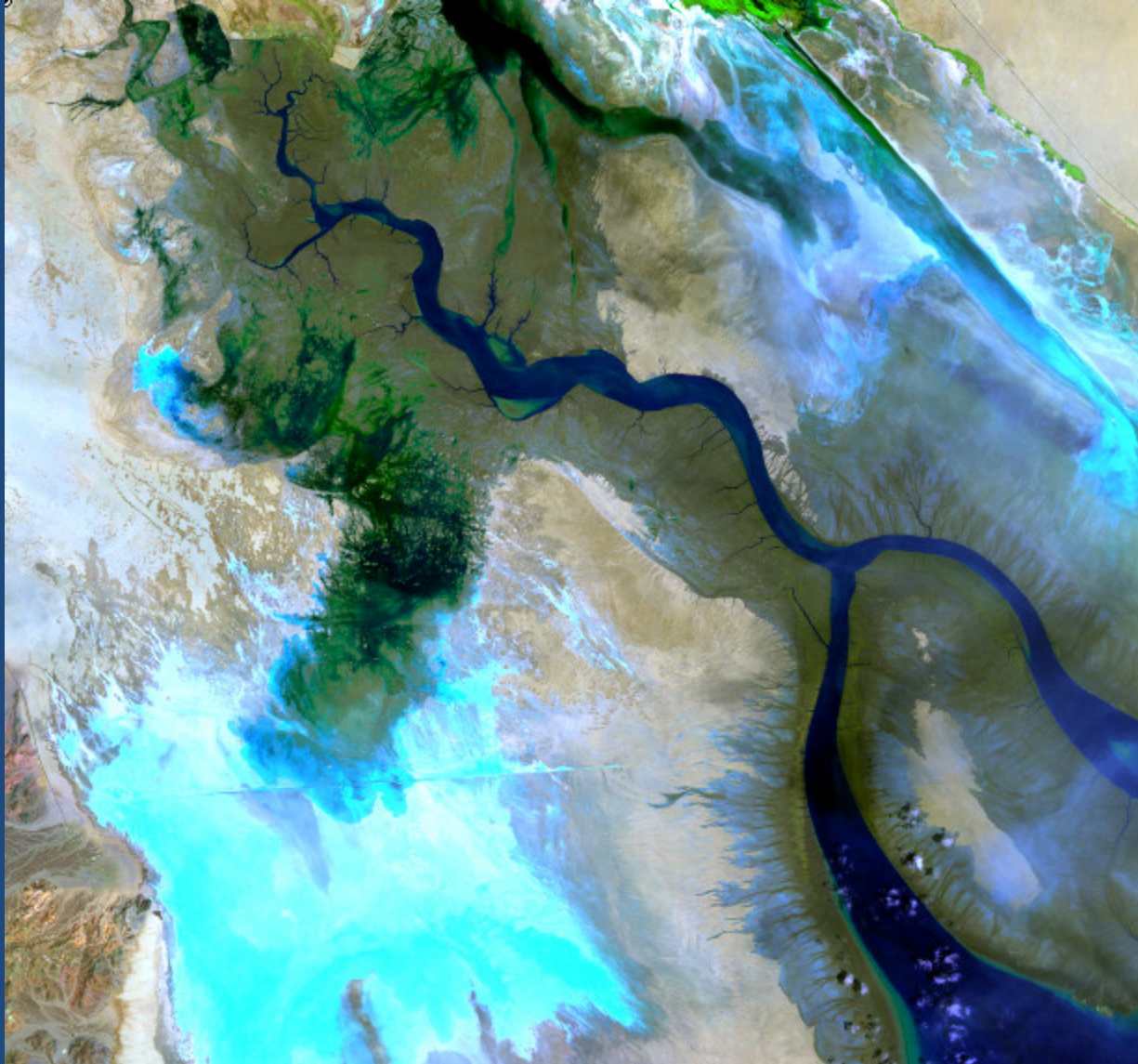


August 20, 2010    5.84m (August 10)

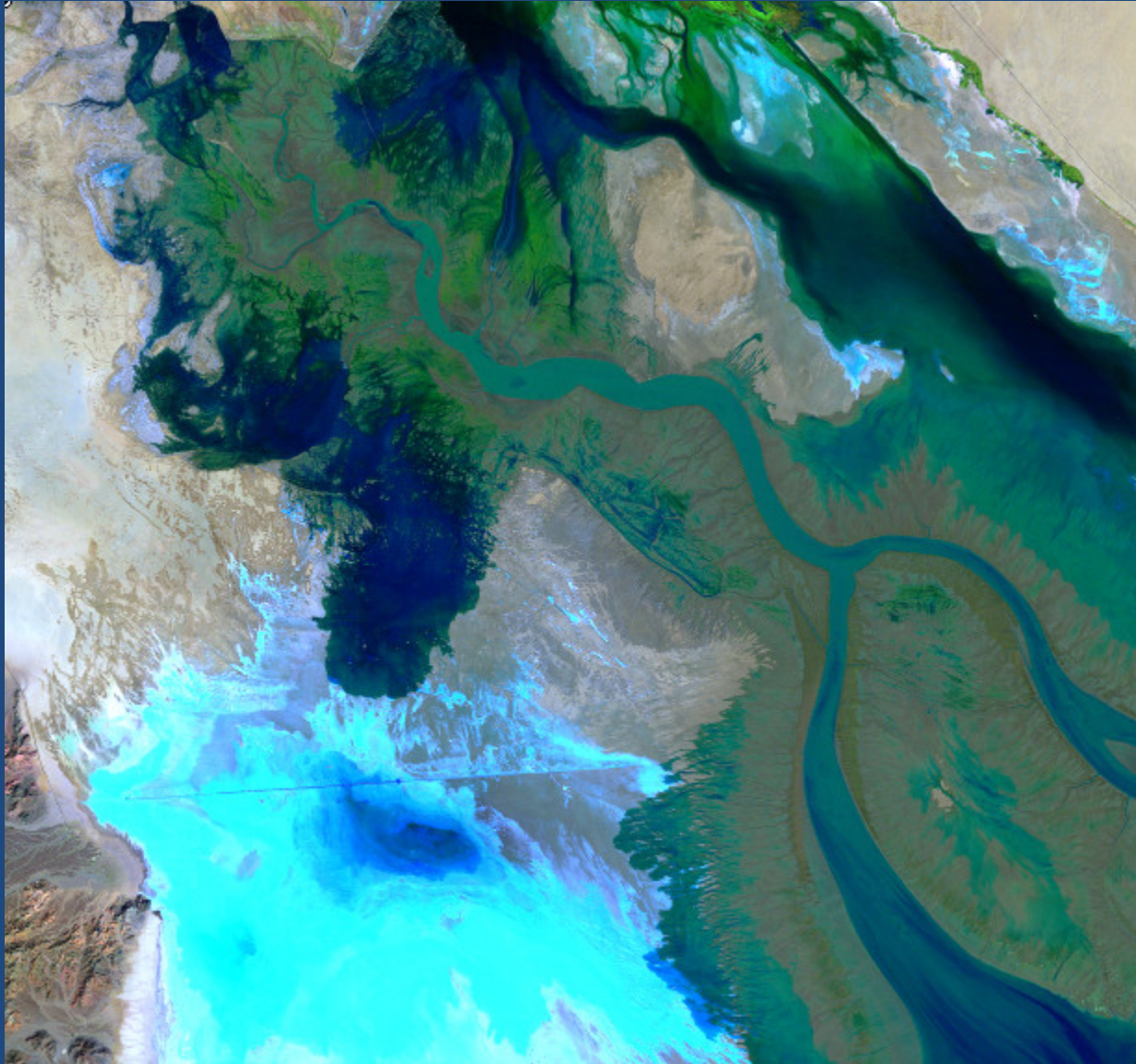




August 7, 2011 5.47m (August 1)



October 26, 2011 5.59m (October 26)



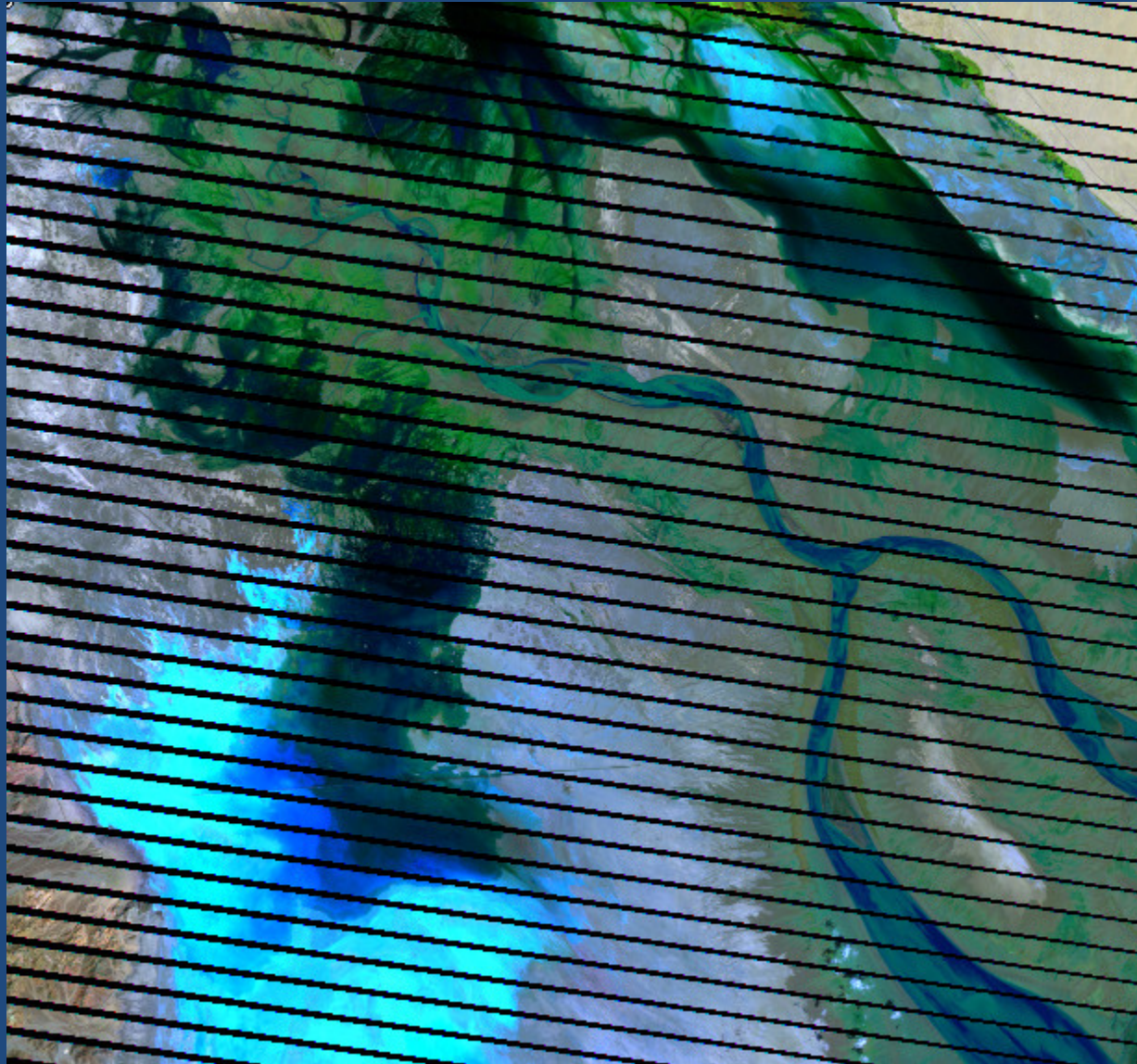


September 2, 2012 5.33m (August 30)





September 18, 2012 5.37m (September 17)





## In conclusion...

- InSAR studies can be effective in measuring ground deformation within the intertidal zone when images are acquired during successive neap tide periods.
- Analysis of changing patterns of tidal inundation as revealed by earth observing satellites, overflights, and field observations can be used to describe conditions within inundated areas producing a random or incoherent INSAR phase from the ground reflection.
- The UAVSAR Mexico Earthquake Study holds great promise for continuing these intertidal zone studies, especially if southern UAVSAR flight lines continue to be acquired during neap tide periods.